

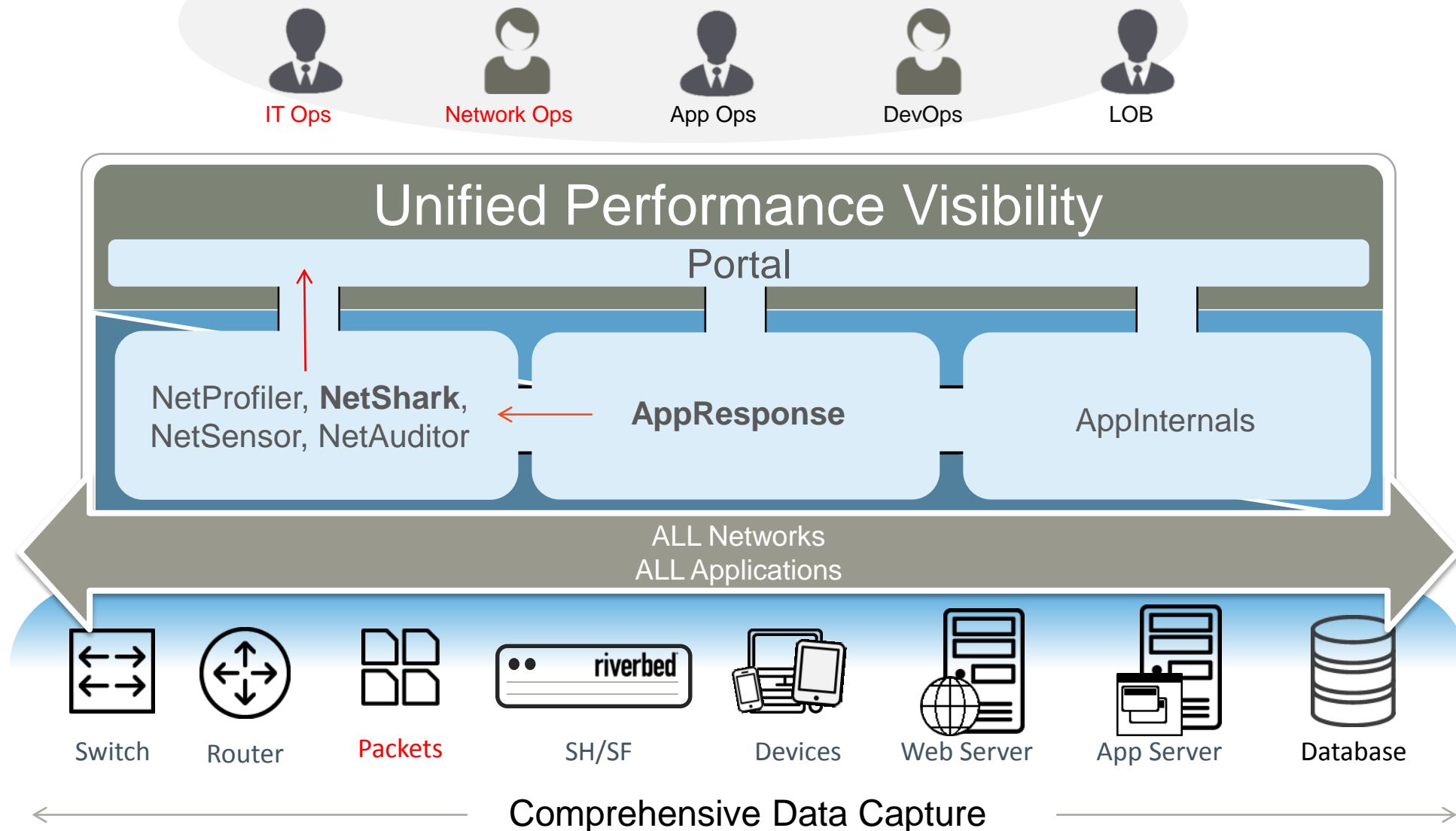


# SteelCentral Packet Capture & Analysis

May 2016

**riverbed**<sup>®</sup>

# SteelCentral Platform



**SteelCentral: Your Command Center for Application Performance**





SteelCentral  
NetShark



# SteelCentral NetShark

## Continuous High-Speed Packet Capture

- Continuous packet capture and storage for retrospective analysis of network, security and app issues
- Smart packet indexing for high query performance and low network overhead
- Mix 1GbE & 10GbE interfaces on same appliance
- Unique multiple concurrent capture jobs
- DPI – distinguish between business & recreational apps (1300+ apps)
- Available as appliance or virtual software
  - Integrated into SteelHead and SteelFusion

## Types of NetShark



SteelCentral NetShark appliance



SteelCentral NetShark Virtual Edition



SteelCentral NetShark for SteelHead EX



SteelCentral NetShark Virtual for SteelFusion

# NetShark Appliances

High-speed packet capture & storage appliances

Description	Form Factor	Total Packet Storage
NetShark 2170	1U	8 TB
NetShark 4170	2U	32 TB
NetShark 6170*	2U	576TB
NetShark Storage Unit 48TB	2U	48 TB
NetShark Storage Unit 72TB	2U	72 TB

NetShark 6170

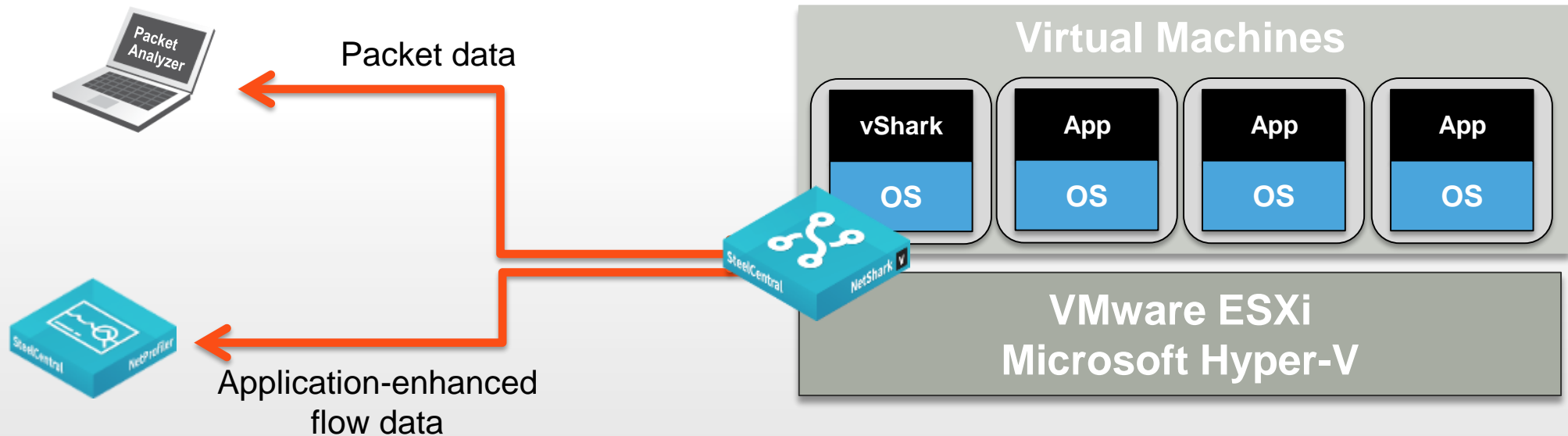


Storage Unit 6170



\* Storage Unit required with NetShark 6170. Up to 8 Storage Units can be used.

# NetShark-V: Visibility into Virtual Environments



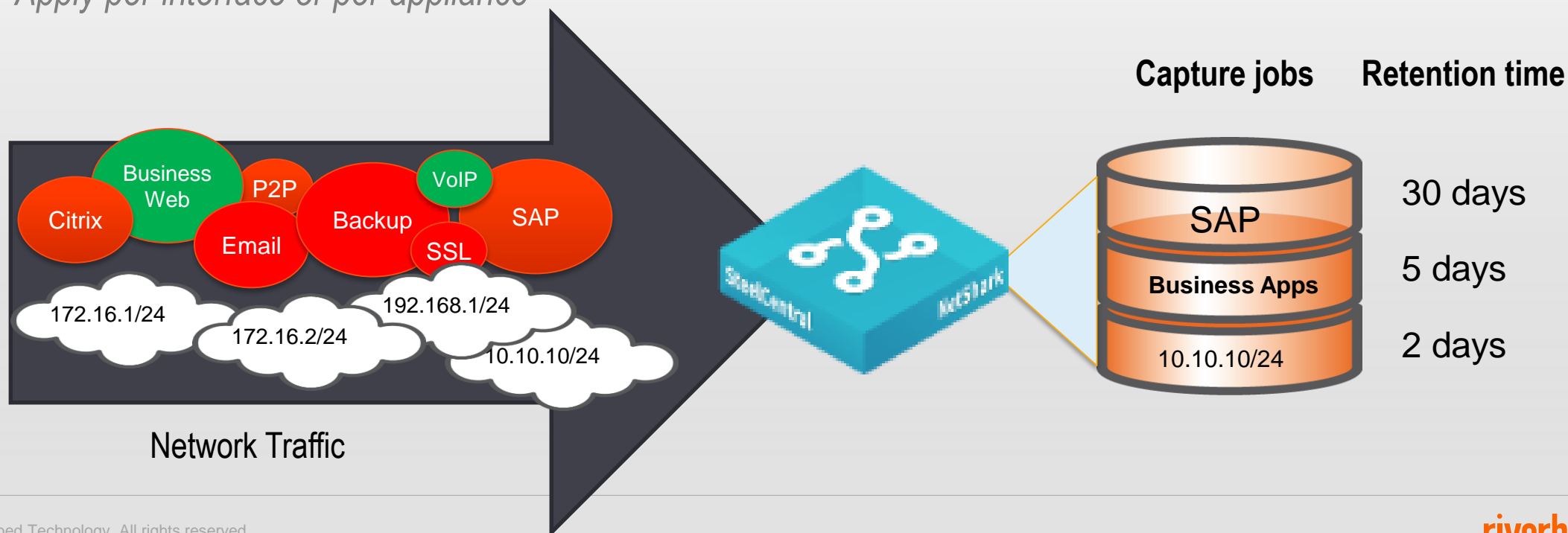
- Real-time visibility into virtualized and cloud environments
  - Software version of NetShark continuous packet capture appliance
  - Monitors all inter-VM traffic crossing VMware vSphere or Microsoft Hyper-V virtual switch
- **Simultaneous** packet capture and flow export
  - Continuous packet capture for back-in-time analysis via Packet Analyzer
  - Store packets locally or on SAN
  - Works with NetProfiler to provide unified visibility across physical & virtual network
- Available in 3 models: 50GB, 1TB or 2TB

# SteelCentral NetShark

## Multiple concurrent capture jobs

### *Run multiple concurrent capture jobs*

- *Configure different data retention and wrap policies per capture job*
- *Apply different filters (standard Wireshark capture filters) or packet slicing per job*
- *Apply per interface or per appliance*





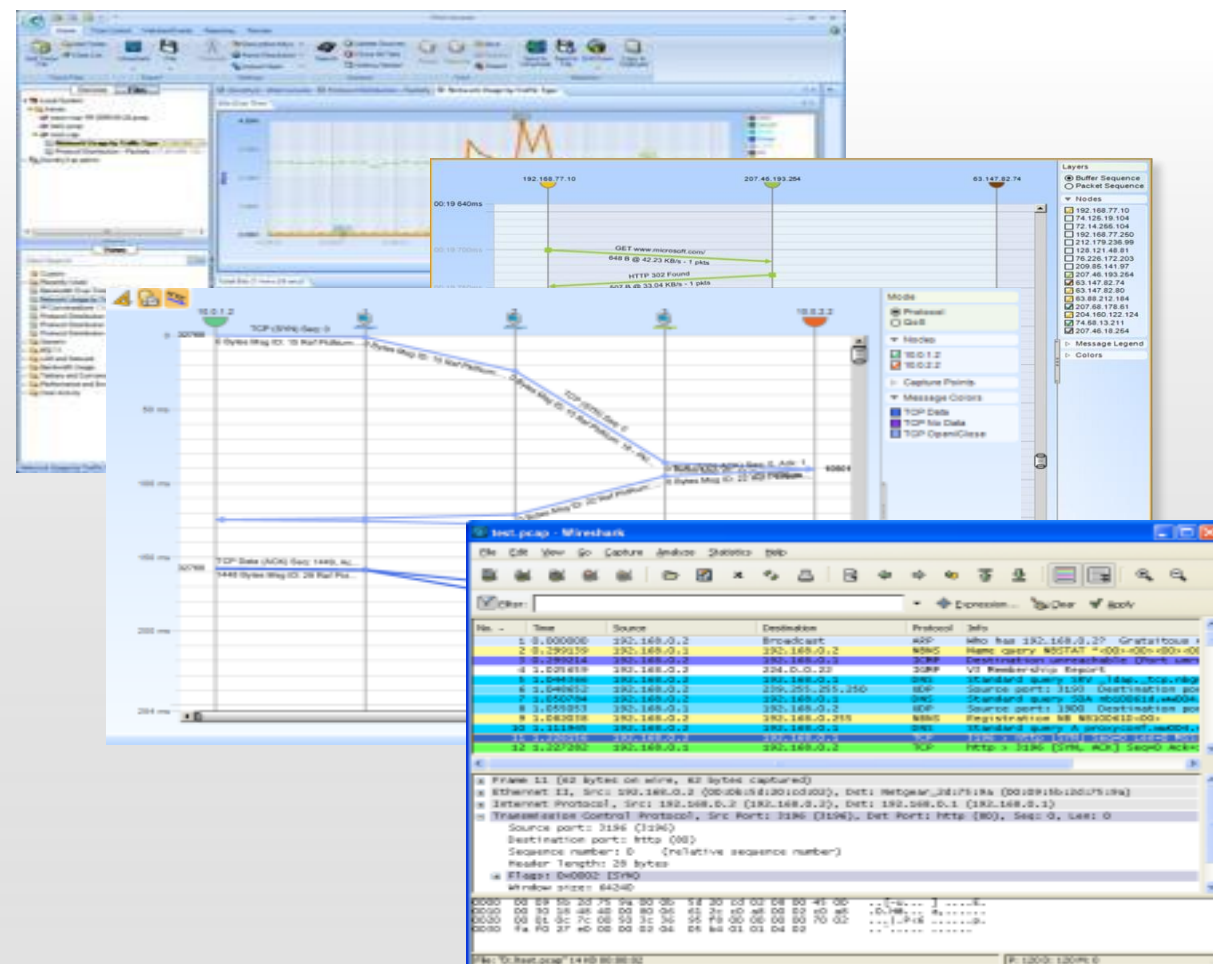
# SteelCentral Packet Analyzer



# SteelCentral Packet Analyzer

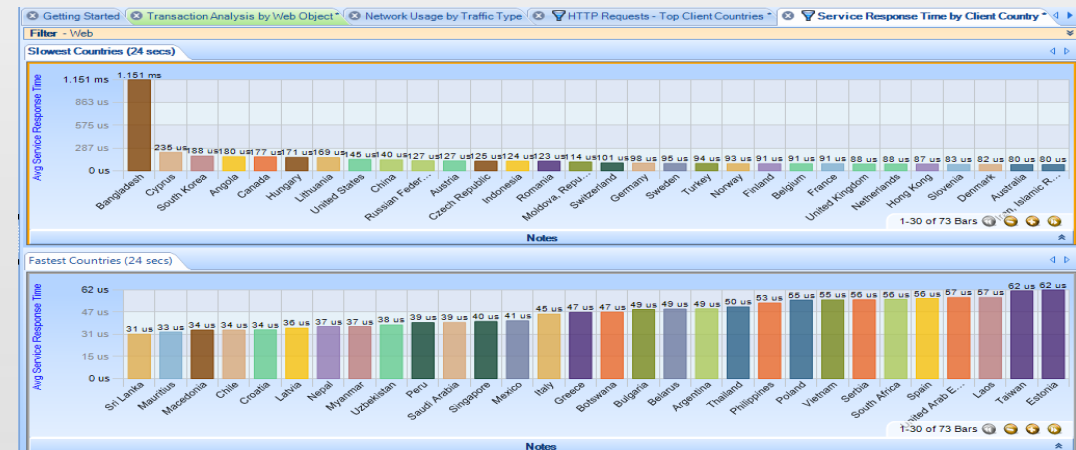
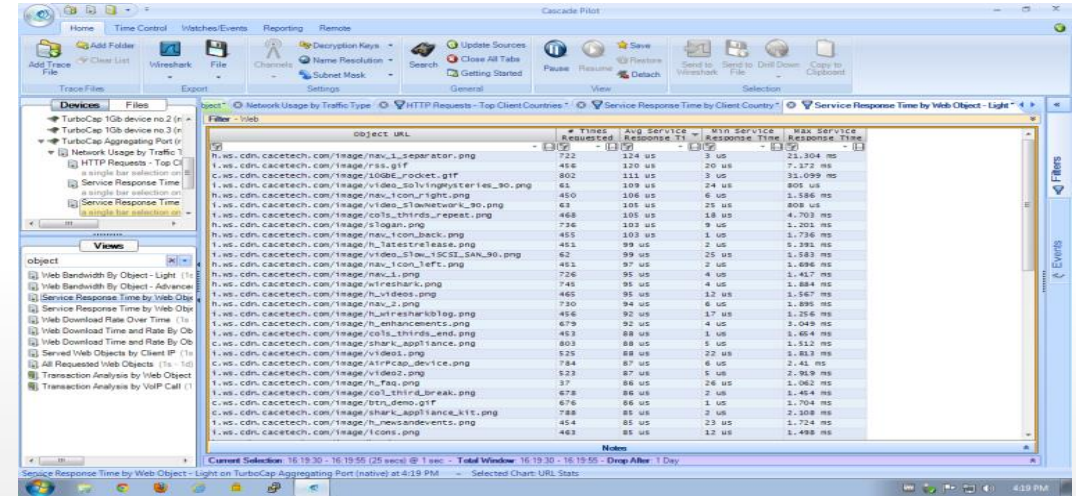
Powerful, visually rich packet analysis software for NetShark

- Intuitive, visual interface with broad selection of interactive Views
- Packet, transaction and multi-segment analysis in a single solution
- *Quickly* open and analyze multi-terabyte trace files
- Seamlessly integrates with Wireshark – world's most popular protocol analyzer
- Integrates with Transaction Analyzer for transaction analysis and “what if” predictions

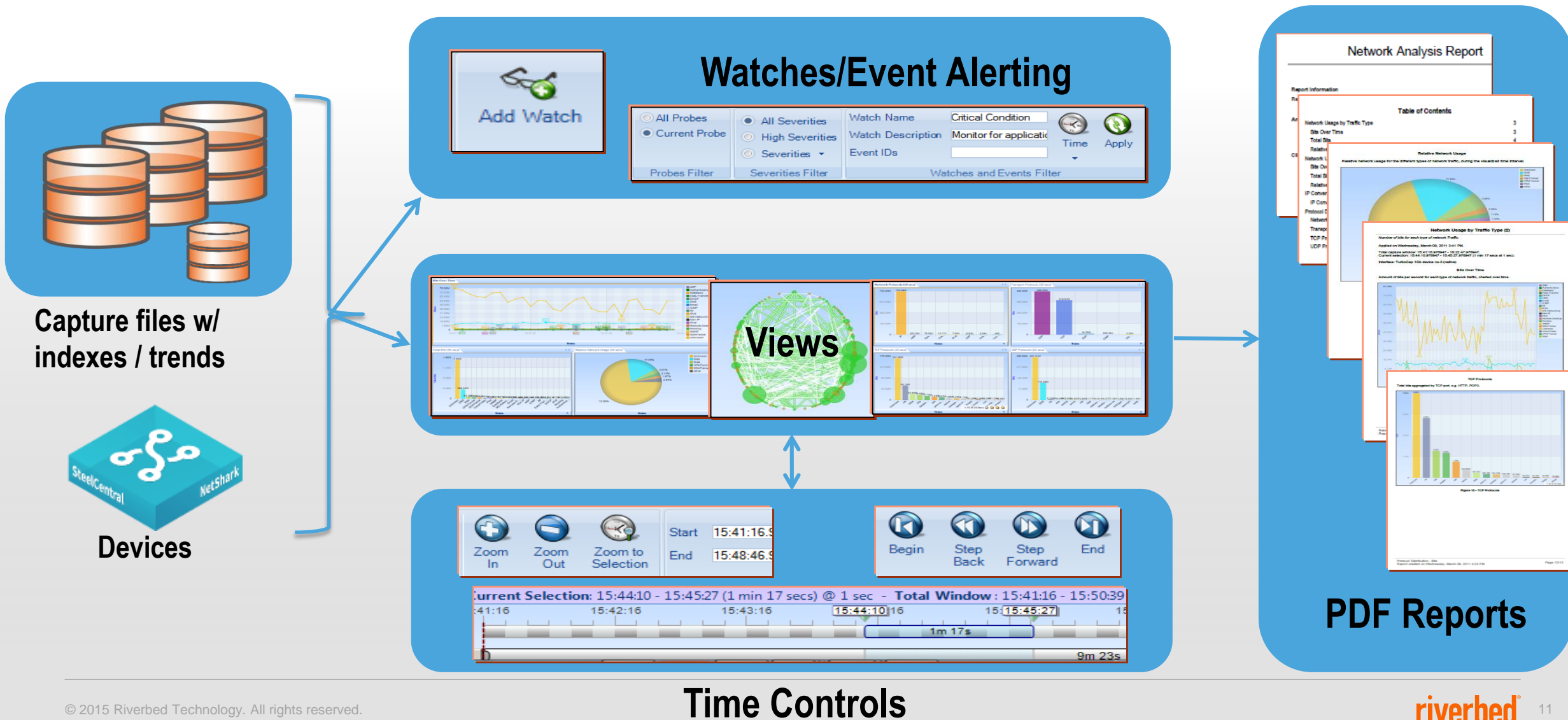


# Broad Selection of Views

- LAN/WAN troubleshooting
  - MAC, VLAN, ARP, ICMP, DHCP, and DNS
- Bandwidth usage
  - MicroBursts, IP, TCP, Web, FIX and VoIP
- Talkers and conversations
  - IP, subnets, countries, TCP, Web, and VoIP, FIX
- Performance and errors
  - IP, TCP, Web, VoIP, FIX
- User activity
  - Web, VoIP, FIX
- 802.11 WLAN troubleshooting
  - Discovery, Bandwidth, Channel Usage, Retransmissions, Signal, Noise



# Packet Analyzer Architecture Summary





# Fast Troubleshooting

## SteelCentral NetShark & Packet Analyzer

- Data is always available

- Facilitate “back-in-time” analysis of network, security and application issues

- Fast problem resolution

- Accelerate identification and troubleshooting of complex problems
- Minimizes downtime and user impact

- Improve IT service responsiveness

- Quickly respond to customer trouble tickets
- Enhance IT productivity by having the right information at your fingertips



# Thank You

# Comparing NetShark and AppResponse

With NetShark/Packet Analyzer, the user is engaged in applying analysis views on-demand



With an AppResponse, the appliance does this automatically



While both appliances offer packet analysis, each is popular for different reasons



## NetShark Strengths

- Analyze multi-TB traces fast without transferring files
- Live and historical packet analysis – local or via distributed, remote NetSharks
- Real-time microsecond alerting and microburst views for fine-grained analysis
- On-demand drag-and-drop, multi-level drill-down analysis
- Leverage SteelHeads for packet capture
- Leverage SteelHeads for optimization, QoS and response time analysis, DPI and path selection monitoring
- Full integration with Wireshark

## AppResponse Strengths

- Automated, continuous analysis of real end-user traffic
- Identify and isolate anomalies
- Response time breakdown into contributing sources
- Web transaction response time at the page level
- Correlate Citrix front-end user session to back-end applications
- Database performance at transaction level
- Leverage SteelHeads for EUE monitoring of optimized web and SaaS apps