

# SteelCentral AppInternals

Quick Demo Deck (QDD)

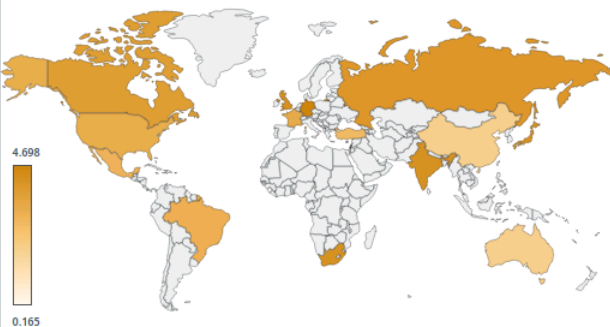
riverbed®

Overview Application Map Transaction Types Servers Instances Geography Search

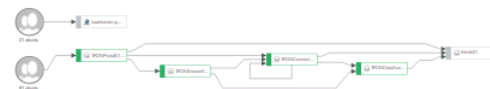
## Performance Compared to Yesterday 12:52 → 13:52

| Metric               | Value  | Visual Representation |
|----------------------|--------|-----------------------|
| Server Response Time | 0.064s | Blue bar              |
| Transactions         | 1.63M  | Purple bar            |
| Page Load Time       | 3.381s | Orange bar            |
| Page Load Count      | 19,822 | Blue bar              |
| Violation Percentage | <1%    | Red bar               |
| Exceptions           | 851    | Yellow bar            |

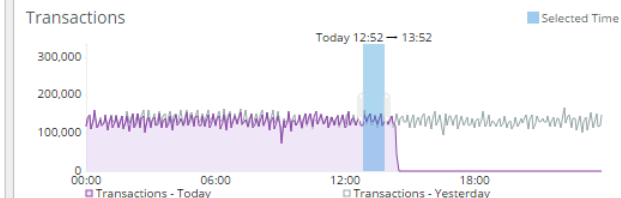
## Geography Page Load Time (sec)



## Application Map



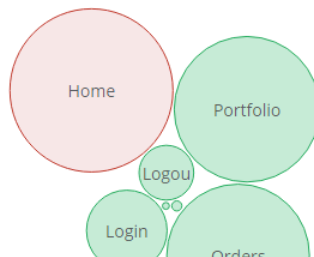
## 24 Hour Overview Compared to Yesterday



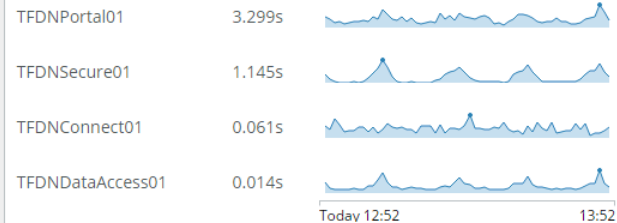
Server Response Time

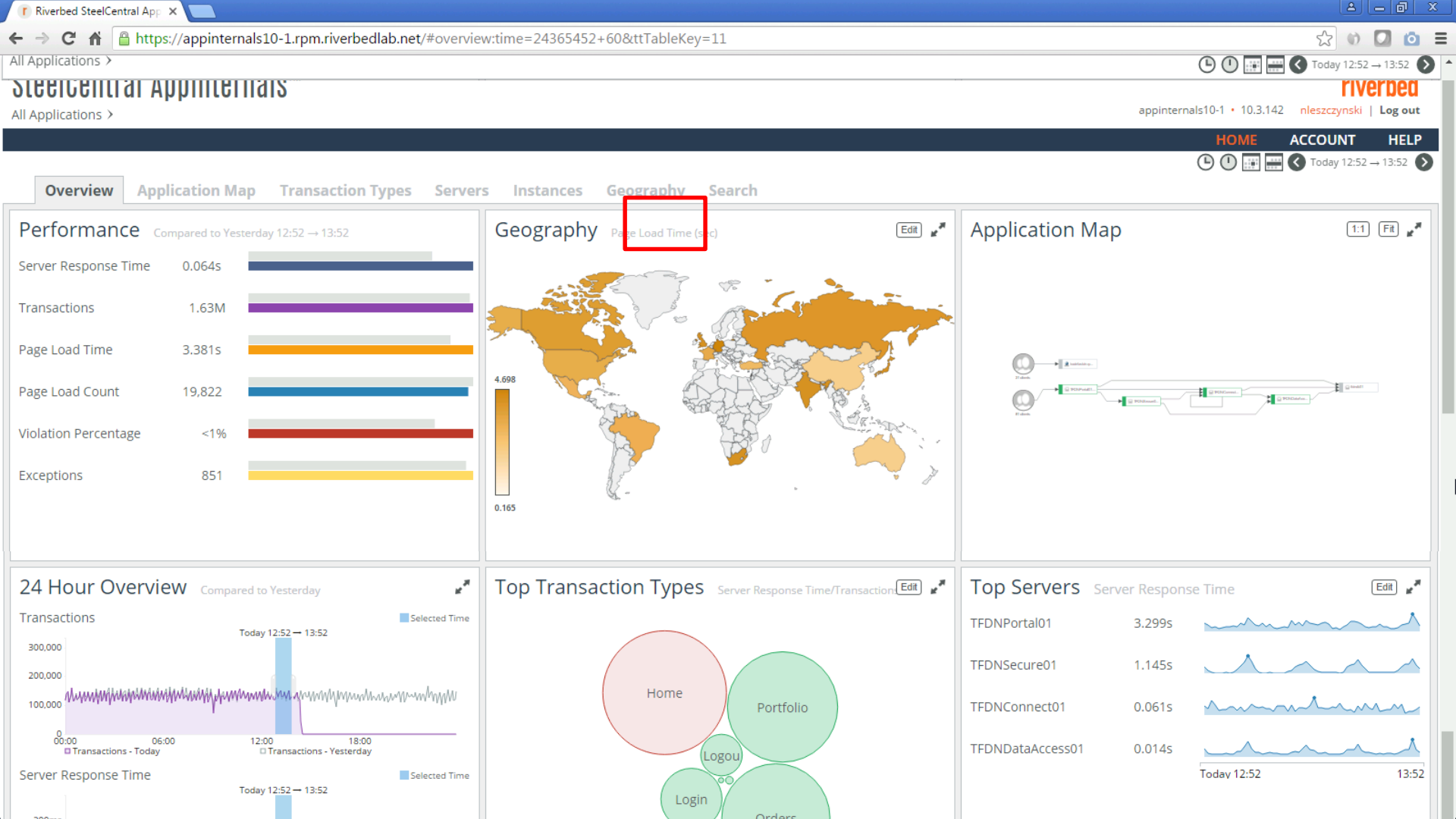


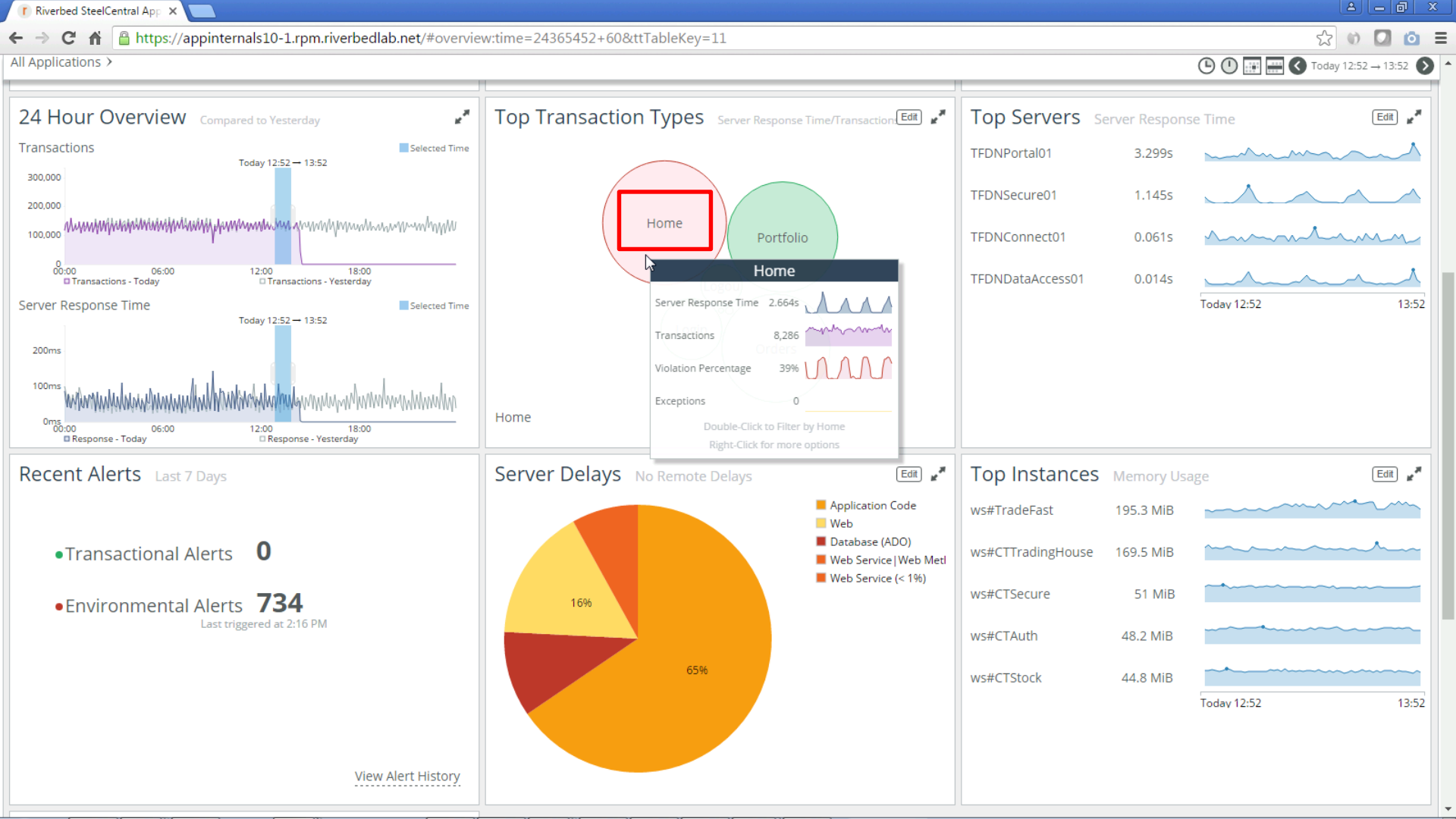
## Top Transaction Types

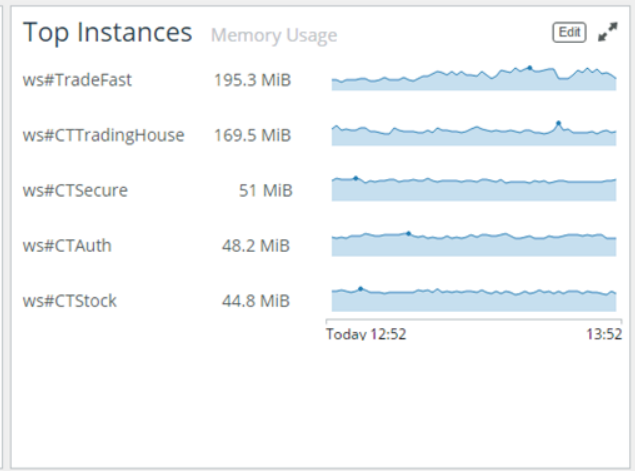
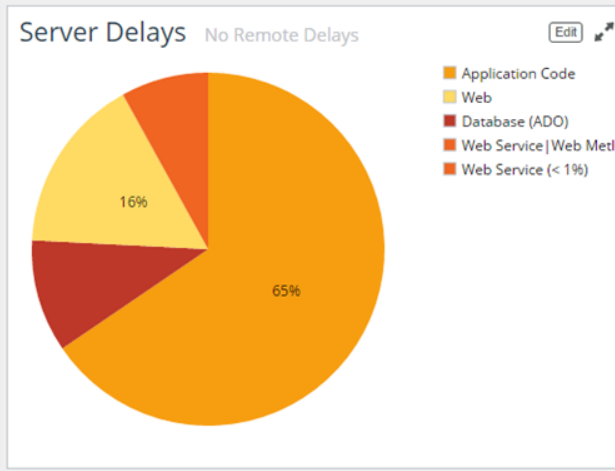
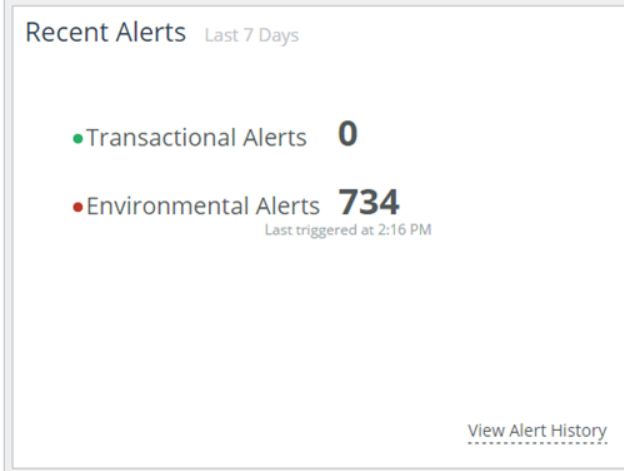
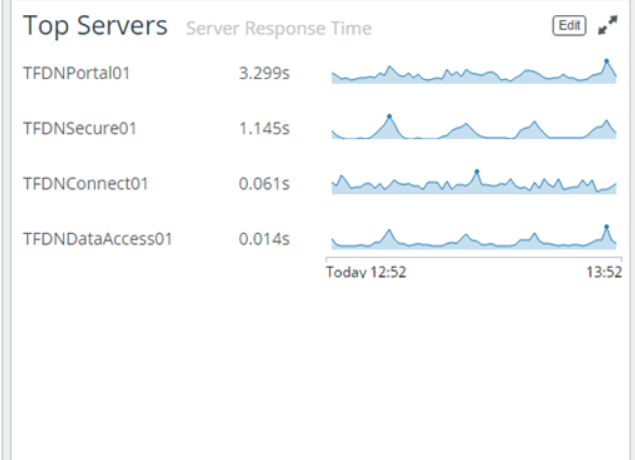
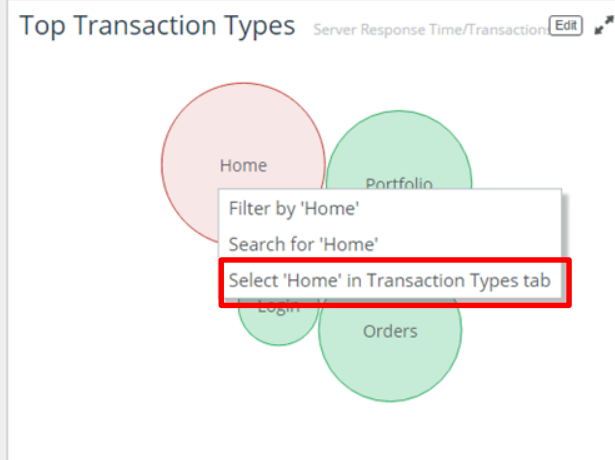
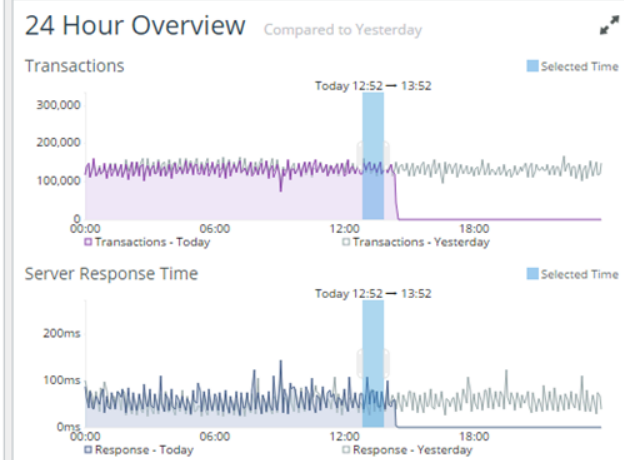


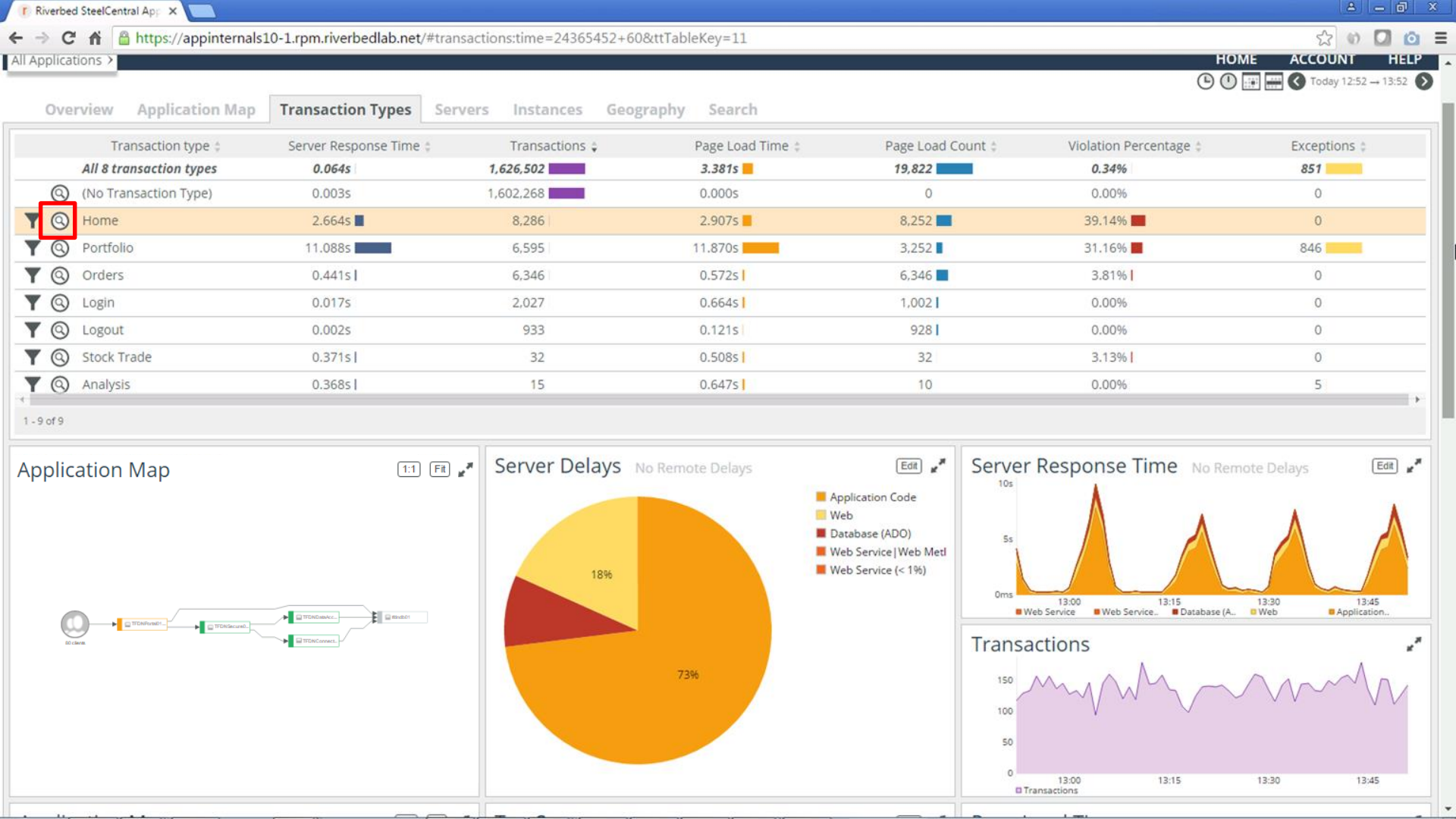
Top Servers   Server Response Time











← → ↺ ↻ 🏠

🔒 https://appinternals10-1.rpm.riverbedlab.net/#search:time=24365452+60&query=dHJhbnNhY3Rpb250eXBIPScldlIjw%253D%253D&search\_datatype=RIVERPATH\_PAGELOADS AJAX

All Applications >

HOME ACCOUNT HELP

🕒 ⚙️ 📄 📊 ⏪ Today 12:52 → 13:52 ⏩

Overview Application Map Transaction Types Servers Instances Geography Search

transactiontype='Home'

Add Criteria >>

Show the top 10000 Slowest End-to-End Transactions For context (optional) ☒ Apply Global Filters

Analysis 🔍

Search

Refine Results >>

User

30s

chuck.lebatt (165)

34s

mary.ellis (148)

33s

janet.griffin (147)

19s

sam.anostegui (146)

34s

sanju.sujanani (143)

34s

sarah.connor (141)

show more...

User IP

30s

10.173.177.148 (165)

34s

10.173.177.122 (148)

33s

10.173.177.132 (147)

34s

10.173.177.118 (143)

34s

10.173.177.164 (141)

36s

10.173.177.134 (139)

show more...

URL Path

38s

/TradeFast/Ho... (8286)

Transaction Type

38s

Home (8286)

Server

38s

TFDNPortal01... (8286)

Region

8,286 Matching Transactions

Response Time (sec.)

Summary of Server Delays

Application Code

Web

Remote

Database (ADO)

Other Categories (< 1%)

Search Results >>

Matching Transactions

Response Time ⬇

Completion Time

Transaction Type

Server

Page Tag 1

Instance

Exceptions

URL Path

Server Delays

Page Load Delays

User

38.402

13:47:20

Home

TFDNPortal01.rpm.riverbedlab.net

ws#TradeFast

/TradeFast/Home.aspx

scott.montgomery

36.07

13:03:20

Home

TFDNPortal01.rpm.riverbedlab.net

ws#TradeFast

/TradeFast/Home.aspx

prato.sadana

35.811

13:34:10

Home

TFDNPortal01.rpm.riverbedlab.net

ws#TradeFast

/TradeFast/Home.aspx

joe.mcelroy

35.567

13:21:12

Home

TFDNPortal01.rpm.riverbedlab.net

ws#TradeFast

/TradeFast/Home.aspx

hideki.watanabe

34.914

13:04:28

Home

TFDNPortal01.rpm.riverbedlab.net

ws#TradeFast

/TradeFast/Home.aspx

joe.mcelroy

34.886

13:04:46

Home

TFDNPortal01.rpm.riverbedlab.net

ws#TradeFast

/TradeFast/Home.aspx

brian.taylor

34.745

13:03:18

Home

TFDNPortal01.rpm.riverbedlab.net

ws#TradeFast

/TradeFast/Home.aspx

colin.lloyd

34.671

13:05:16

Home

TFDNPortal01.rpm.riverbedlab.net

ws#TradeFast


/TradeFast/Home.aspx

hideki.watanabe

URL <http://tradefastdn.rpm.riverbedlab.net/TradeFast/Home.aspx>

19:04:20 Apr 25 2016

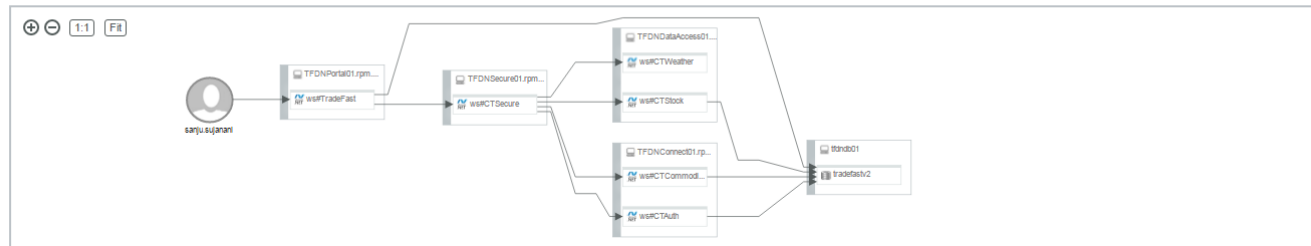
Page Load Time 38.096s  
Server Response Time 37.783s  
Exceptions  
HTTP Status 200

User   
User IP 10.173.177.118  
Location California, United States

Page Title TradeFast Home  
Transaction Type Home

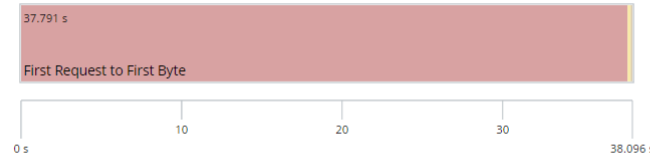
## Summary

- The **slowest** back-end tier was **ws#CTSecure** (82% of back-end processing), which had an average **CPU usage of 98%**
- The **slowest** method was **com.TradeFast.SecureService.StockRequestHandler.CalculateGrowthRate** (53% of back-end processing)
- The **slowest** front-end component was Time to first byte (99%)

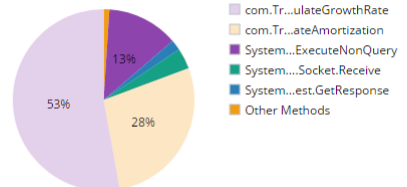


By Method ▼

## Page Load Delays



## Method Delays



## Inbound URLs

| Duration ↕ | URL ↕                                  | Server ↕                             | Instance ↕            |
|------------|--|--------------------------------------|-----------------------|
| 0.031s     | /CTAuth/Service1.aspx                  | TFDNConnect01.rpm.riverbedlab.net    | ws#CTAuth             |
| 0.016s     | /CTAuth/Service1.aspx                  | TFDNConnect01.rpm.riverbedlab.net    | ws#CTAuth             |
| 0.000s     | /TradeFast/Home.aspx                   | TFDNPortal01.rpm.riverbedlab.net     | ws#TradeFast          |
| 4.836s     | /CTStock/Service1.aspx                 | TFDNDataAccess01.rpm.riverbedlab.net | ws#CTStock            |
| 0.015s     | /CTWeather/Service1.aspx               | TFDNDataAccess01.rpm.riverbedlab.net | ws#CTWeather          |
| 0.000s     | /CTCommodityFutures/FuturesService.svc | TFDNConnect01.rpm.riverbedlab.net    | ws#CTCommodityFutures |
| 0.000s     | /CTCommodityFutures/FuturesService.svc | TFDNConnect01.rpm.riverbedlab.net    | ws#CTCommodityFutures |
| 0.047s     | /CTSecure/Service1.aspx                | TFDNSecure01.rpm.riverbedlab.net     | ws#CTSecure           |
| 35.771s    | /CTSecure/Service1.aspx                | TFDNSecure01.rpm.riverbedlab.net     | ws#CTSecure           |

## Outbound URLs



## Top Calls

☒ Group calls by method name

## Top Calls

| Total Active Time ▾ | Number of Calls ▾ | Class ▾   | Method ▾                   | Category ▾       |
|---------------------|-------------------|---|----------------------------|------------------|
| 19.983s             | 28                | com.TradeFast.SecureService.StockRequestHandler   | CalculateGrowthRate        | Application Code |
| 10.530s             | 1                 | com.TradeFast.SecureService.BondRequestHandler  | CalculateAmortization      | Application Code |
| 4.805s              | 4                 | System.Data.SqlClient.SqlCommand  | ExecuteNonQuery            | Database (ADO)   |
| 1.405s              | 16                | System.Net.Sockets.Socket   | Receive                    | Remote           |
| 0.701s              | 7                 | System.Net.HttpWebRequest   | GetResponse                | Web              |
| 0.280s              | 57                | System.Web.Hosting.PipelineRuntime  | ProcessRequestNotification | Web              |
| 0.047s              | 9                 | com.TradeFast.Utils.Helper  | GetRunConfigurationOption  | Application Code |
| 0.031s              | 4                 | System.Data.SqlClient.SqlCommand  | ExecuteReader              | Database (ADO)   |
| 0.016s              | 5                 | com.TradeFast.Utils.Helper  | GetServiceURL              | Application Code |
| 0.015s              | 6                 | Microsoft.Practices.EnterpriseLibrary.Common.Configuration.ObjectBuilder.ConfiguredObjectStrategy | PreBuildUp                 | Application Code |

## Remote Calls

| Active Time ▾  | Requesting Server ▾ | Requesting Instance ▾ | Requesting Port ▾ | Remote Address ▾ | Bytes Sent ▾ | Bytes Received ▾ |
|----------------|---------------------|-----------------------|-------------------|------------------|--------------|------------------|
| Table is empty |                     |                       |                   |                  |              |                  |

## Call Tree

## Call Tree

## Call Search

Edit

| Depth | Class                             | Method                   | Instance    | Start Time   | Active Time (s) | 0s45.4s | Exception | Parameter |
|-------|-----------------------------------|--------------------------|-------------|--------------|-----------------|---------|-----------|-----------|
| 8     | com.TradeFast.U...gsSecureService | get_StockServiceURL      | ws#CTSecure | 19:03:51.069 | 0               |         | -         | -         |
| 8     | com.TradeFast.S...ervice.Service1 | GetStockDetails          | ws#CTSecure | 19:03:51.069 | 0               |         | -         | -         |
| 8     | com.TradeFast.S...kRequestHandler | GetAnalystRecommendation | ws#CTSecure | 19:03:56.217 | 0               |         | -         | -         |
| 9     | com.TradeFast.U...gsSecureService | get_IsExecuteRecursion   | ws#CTSecure | 19:03:56.217 | 0               |         | -         | -         |
| 9     | com.TradeFast.S...kRequestHandler | CalculateGrowthRate      | ws#CTSecure | 19:03:56.217 | 0.062           |         | -         | -         |
| 9     | com.TradeFast.S...kRequestHandler | CalculateGrowthRate      | ws#CTSecure | 19:03:56.279 | 0.406           |         | -         | -         |
| 9     | com.TradeFast.S...kRequestHandler | CalculateGrowthRate      | ws#CTSecure | 19:03:56.685 | 0.436           |         | -         | -         |
| 9     | com.TradeFast.S...kRequestHandler | CalculateGrowthRate      | ws#CTSecure | 19:03:57.121 | 0.702           |         | -         | -         |
| 9     | com.TradeFast.S...kRequestHandler | CalculateGrowthRate      | ws#CTSecure | 19:03:57.823 | 0.406           |         | -         | -         |
| 9     | com.TradeFast.S...kRequestHandler | CalculateGrowthRate      | ws#CTSecure | 19:03:58.229 | 0.406           |         | -         | -         |
| 9     | com.TradeFast.S...kRequestHandler | CalculateGrowthRate      | ws#CTSecure | 19:03:58.635 | 0.218           |         | -         | -         |
| 9     | com.TradeFast.S...kRequestHandler | CalculateGrowthRate      | ws#CTSecure | 19:03:58.853 | 0.593           |         | -         | -         |
| 9     | com.TradeFast.S...kRequestHandler | CalculateGrowthRate      | ws#CTSecure | 19:03:59.446 | 0.405           |         | -         | -         |

SQL

☒ Group calls by statement

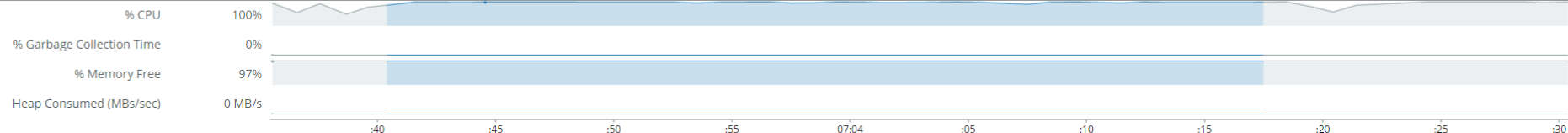
| Total Duration ↕ | Number of Calls ↕ | SQL ↕  |
|------------------|-------------------|--|
| 4.805s           | 1                 | SELECT Q1.Symbol,Q1.Low,Q1.[Open],Q1.Volume,Q1.Price,Q1.High,Q1.CompanyName,Q1.Change FROM QuoteReporting Q1 CROSS JOIN QuoteReporting Q2 ;SELECT Q1.Symbol,Q1.Low,Q1.[Open],Q1.Volume,Q1.Price,Q1.High,Q1.CompanyName,Q1.Change FROM QuoteReporting Q1 CROSS JOIN QuoteReporting Q2 ; |
| 0.031s           | 1                 | SELECT Symbol,Low,[Open],Volume,Price,High,CompanyName,Change, SecurityClassification FROM StockExchangeHongKong WHERE Symbol=@symbol;   |
| 0.000s           | 1                 | SELECT cf.commodityID, cf.commodityName, cf.units, cf.price, cf.changePercentage, cf.contractDate, cf.commodityFuturesTypeID,cft.futuresTypeName FROM commodityFutures cf INNER JOIN commodityFuturesType cft ON cft.FuturesTypeID = cf.commodityFuturesTypeID                         |
| 0.000s           | 2                 | GetAuthToken   |
| 0.000s           | 1                 | UPDATE trader SET stockwatchlist='SEMAX,0147', stockExchangeName='Hongkong Stock Exchange' WHERE userid='sanju.sujanani'   |

## Environmental Performance

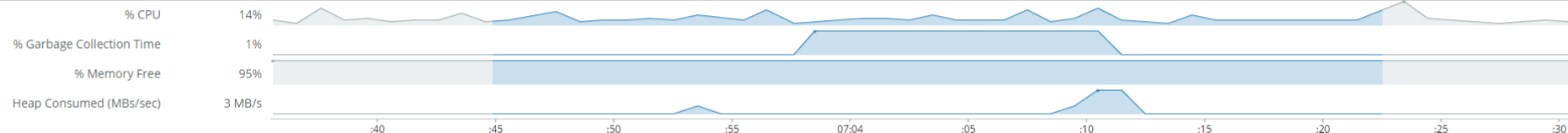
The highlighted region shows when this transaction occurred on the tier

Order tiers by Start Time +/- 5 seconds

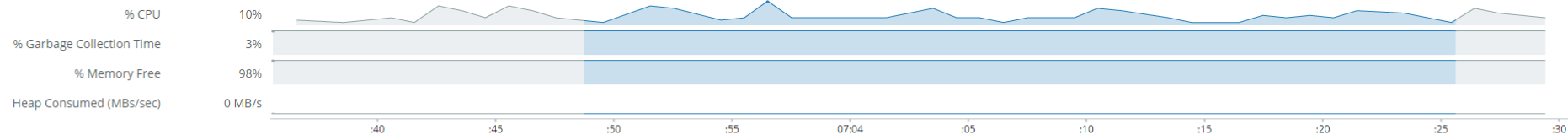
## ws#CTSecure



## ws#TradeFast



## ws#CTAuth

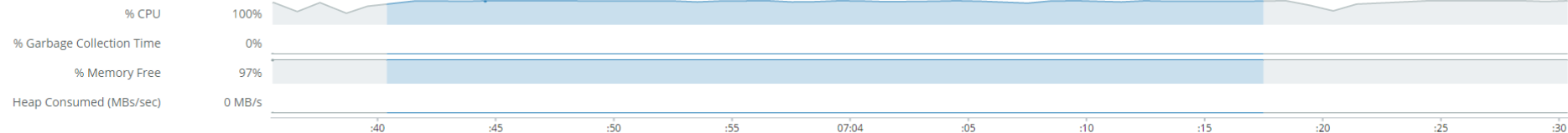


## Environmental Performance

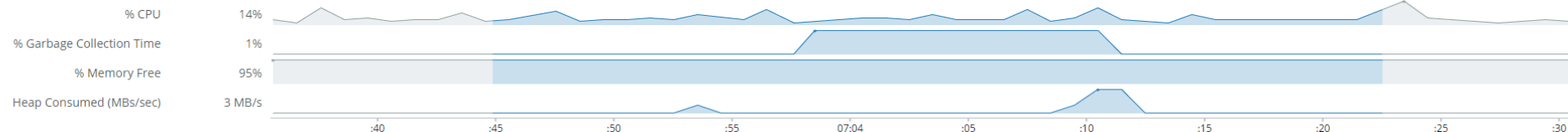
The highlighted region shows when this transaction occurred on the tier

Order tiers by 

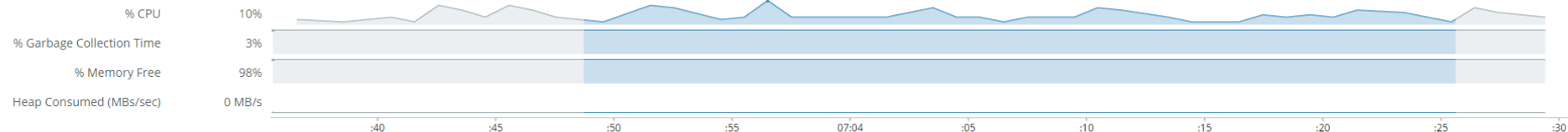
## ws#CTSecure



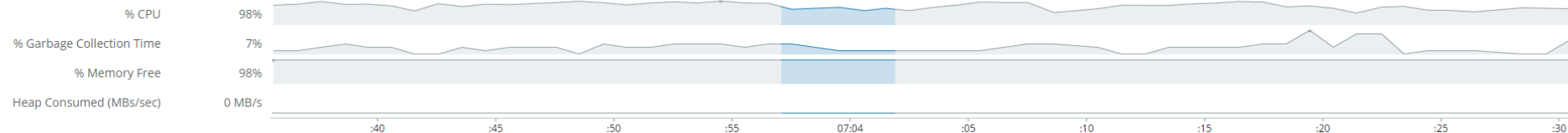
## ws#TradeFast



## ws#CTAuth



## ws#CTStock



## ws#CTWeather



## Resources

| Filter by URL |   | <input checked="" type="radio"/> All <input type="radio"/> Documents <input type="radio"/> Style <input type="radio"/> Scripts <input type="radio"/> XHR <input type="radio"/> Images <input type="radio"/> Media <input type="radio"/> Fonts <input type="radio"/> Other |              |          |          |  |  |  |  | <input checked="" type="checkbox"/> Show server-to-server |  |
|---------------|---|---|--------------|----------|----------|--|--|--|--|---|--|
| URL           |   | Status  | Content Type | Size     | Duration | <div><div></div><div>0s102038.004s</div></div> |  |  |  |   |  |
|               | tradefastdn.rpm.riverbedlab.net/TradeFast/Home.aspx             | 200   | text/html    | 28.5 KiB | 38.004s  | <div><div></div></div>                         |  |  |  |   |  |
|               | tfdnsecure01.rpm.riverbedlab.net/CTSecure/Service1.aspx[method  | 200   | text/xml     | 4.2 KiB  | 37.237s  | <div><div></div></div>                         |  |  |  |   |  |
|               | tfdnconnect01.rpm.riverbedlab.net/CTAuth/Service1.aspx[method:  | 200   | text/xml     | 800 B    | 0.053s   | <div><div></div></div>                         |  |  |  |   |  |
|               | tfdndataaccess01.rpm.riverbedlab.net/CTStock/Service1.aspx[metf | 200   | text/xml     | 1.5 KiB  | 3.975s   | <div><div></div></div>                         |  |  |  |   |  |
|               | tfdndataaccess01.rpm.riverbedlab.net/CTWeather/Service1.aspx[r  | 200   | text/xml     | 890 B    | 0.256s   | <div><div></div></div>                         |  |  |  |   |  |
|               | tfdnsecure01.rpm.riverbedlab.net/CTSecure/Service1.aspx[method  | 200   | text/xml     | 6.7 KiB  | 0.747s   | <div><div></div></div>                         |  |  |  |   |  |
|               | tfdnconnect01.rpm.riverbedlab.net/CTAuth/Service1.aspx[method:  | 200   | text/xml     | 800 B    | 0.032s   | <div><div></div></div>                         |  |  |  |   |  |
|               | tfdnconnect01.rpm.riverbedlab.net/CTCommodityFutures/FuturesS   | 200   | text/xml     | 6.9 KiB  | 0.010s   | <div><div></div></div>                         |  |  |  |   |  |

## Analysis Operators

View additional performance metrics for related transactions

View overview report for

[all runtime instances in this transaction](#)

[all servers in this transaction](#)

Interactively examine performance for

[all transactions on these instances](#)

[all transactions on these servers](#)

View response time and transaction rate over time for

[the entry point instance](#)

[the entry point URL](#)

[the entry point URL path](#)




Summarize instances from this transaction

[for all transactions on these instances](#)

[for all urlpaths from this transaction on these instances](#)

View normal operating range for all transactions on these instances

[for response time](#)

|  |   |     |          |         |        |
|--|---|-----|----------|---------|--------|
|   | tfdnsecure01.rpm.riverbedlab.net/CTSecure/Service1.asmx[method: | 200 | text/xml | 6.7 KIB | 0.747s |
|   | tfdnconnect01.rpm.riverbedlab.net/CTAuth/Service1.asmx[method:  | 200 | text/xml | 800 B   | 0.032s |
|  | tfdnconnect01.rpm.riverbedlab.net/CTCommodityFutures/FuturesS   | 200 | text/xml | 6.9 KIB | 0.010s |

## Analysis Operators

View additional performance metrics for related transactions

View overview report for

- [all runtime instances in this transaction](#)
- [all servers in this transaction](#)

Interactively examine performance for

- [all transactions on these instances](#)
- [all transactions on these servers](#)

View response time and transaction rate over time for

- [the entry point instance](#)
- [the entry point URL](#)
- [the entry point URL path](#)

Summarize instances from this transaction

- [for all transactions on these instances](#)
- [for all urlpaths from this transaction on these instances](#)

View normal operating range for all transactions on these instances

- [for response time](#)
- [for transaction rate](#)

View normal operating range on these servers

- [for response time](#)
- [for transaction rate](#)

For the 1,000 slowest transactions on these instances (computationally intensive), view

- [processing time delays for these instances](#)

For the slowest method in this transaction (com.TradeFast.SecureService.BondRequestHandler.CalculateAmortization), view

- [total active time over time](#)
- [average response time over time](#)

Riverbed SteelCentral App xRiverbed SteelCentral App x

https://appinternals10-1.rpm.riverbedlab.net/#search:time=24365477+60&id=13357009993&rb\_use\_cache=true&apply\_globals=false&context\_name=context%2520(optional)&plugin

All Applications >HOMEACCOUNTHELP

Today 13:17 → 14:17

OverviewApplication MapTransaction TypesServersInstancesGeographySearch

transactiontype = 'home' | callsAnalysisSearch

Add Criteria >>Show the top10000SlowestTransaction SegmentsForcontext (optional)Apply Global Filters

Calls

Top 10,000 Slowest Matching Transactions:

Performance details of sqlfamily (if applicable) and method calls for the slowest 10,000 transactions, showing the top 50 class.methods.

Search: (transactiontype = 'home') | calls

Matching Transaction Count: 10,000

Transaction Duration (avg): 4.26

Transaction Duration (max): 39.17

Transaction Duration (total): 42,629.81

| Total Processing Time ⓘ | Processing Time/call ⓘ | Maximum Processing Time ⓘ | Total Duration ⓘ | Duration/call ⓘ | Maximum Duration ⓘ | Method or SQL Family ⓘ   |
|-------------------------|------------------------|---------------------------|------------------|-----------------|--------------------|--|
| 14,632.69 (34%)         | 1.03                   | 38.34                     | 14,632.69 (34%)  | 1.03            | 38.34              | System.Net.Sockets.Socket.Receive                                    |
| 7,888.70 (19%)          | 0.21                   | 2.46                      | 7,888.70 (19%)   | 0.21            | 2.46               | com.TradeFast.SecureService.StockRequestHandler.CalculateGrowthRate  |
| 7,363.41 (17%)          | 0.52                   | 36.85                     | 7,363.41 (17%)   | 0.52            | 36.85              | System.Net.Sockets.Socket.Receive (10.173.175.104)                   |
| 6,283.17 (15%)          | 1.89                   | 12.51                     | 6,291.45 (15%)   | 1.89            | 12.51              | com.TradeFast.SecureService.BondRequestHandler.CalculateAmortization |
| 1,813.28 (4%)           | 0.17                   | 8.77                      | 1,813.28 (4%)    | 0.17            | 8.77               | System.Net.Sockets.Socket.Receive (10.173.175.105)                   |
| 1,729.27 (4%)           | 0.31                   | 9.11                      | 1,729.27 (4%)    | 0.31            | 9.11               | System.Data.SqlClient.SqlCommand.ExecuteNonQuery                     |
| 1,683.89 (4%)           | 0.08                   | 0.86                      | 25,674.19 (60%)  | 1.19            | 38.45              | System.Net.HttpWebRequest.GetResponse                                |
| 849.12 (2%)             | 0.01                   | 2.46                      | 84,620.33 (199%) | 1.07            | 39.17              | System.Web.Hosting.PipelineRuntime.ProcessRequestNotification        |
| 179.59 (0%)             | 0.02                   | 1.29                      | 179.59 (0%)      | 0.02            | 1.29               | System.Net.Sockets.Socket.Receive (10.173.175.103)                   |
| 56.34 (0%)              | 0.01                   | 1.89                      | 56.34 (0%)       | 0.01            | 1.89               | com.TradeFast.Utils.Helper.GetRunConfigurationOption                 |
| 52.44 (0%)              | 0.003                  | 0.87                      | 52.44 (0%)       | 0.003           | 0.87               | com.TradeFast.Utils.Helper.GetServiceURL                             |
| 41.90 (0%)              | 0.05                   | 1.45                      | 90.60 (0%)       | 0.10            | 2.59               | com.TradeFast.Utils.Helper.RunDeploymentOption                       |
| 9.49 (0%)               | 0.002                  | 0.14                      | 22,286.42 (52%)  | 4.57            | 39.17              | ASP.home_aspx.BeginProcessRequest                                    |



# Thank You

