

# R&M Raceway System

## VISIO Planning Aid and Configurator

Version 1.1 – 01.2013



## USING R&M VISIO TEMPLATES AND STENCILS FOR R&M RACEWAY SYSTEMS



By using the R&M Visio templates and stencils that were specifically designed to document and configure R&M Raceway systems, you can easily complement your project plans with a Raceway system or create new ones. In addition, using the templates automatically creates a parts list in the process.

### THE INDIVIDUAL STEPS ARE:

1. Open existing true-to-scale floorplan in R&M Visio if that is your starting point or create a new floorplan to scale using the Visio templates (for Raceway systems).

The individual steps are:

- RACEWAY Scale 1 to 20.vst (scale 1:20)
  - RACEWAY Scale 1 to 50.vst (scale 1:50)
  - RACEWAY Scale 1 to 100.vst (scale 1:100)
2. Draw up a floorplan to scale or use existing floorplan.
  3. Draw up your RACEWAY system with the provided Visio templates.

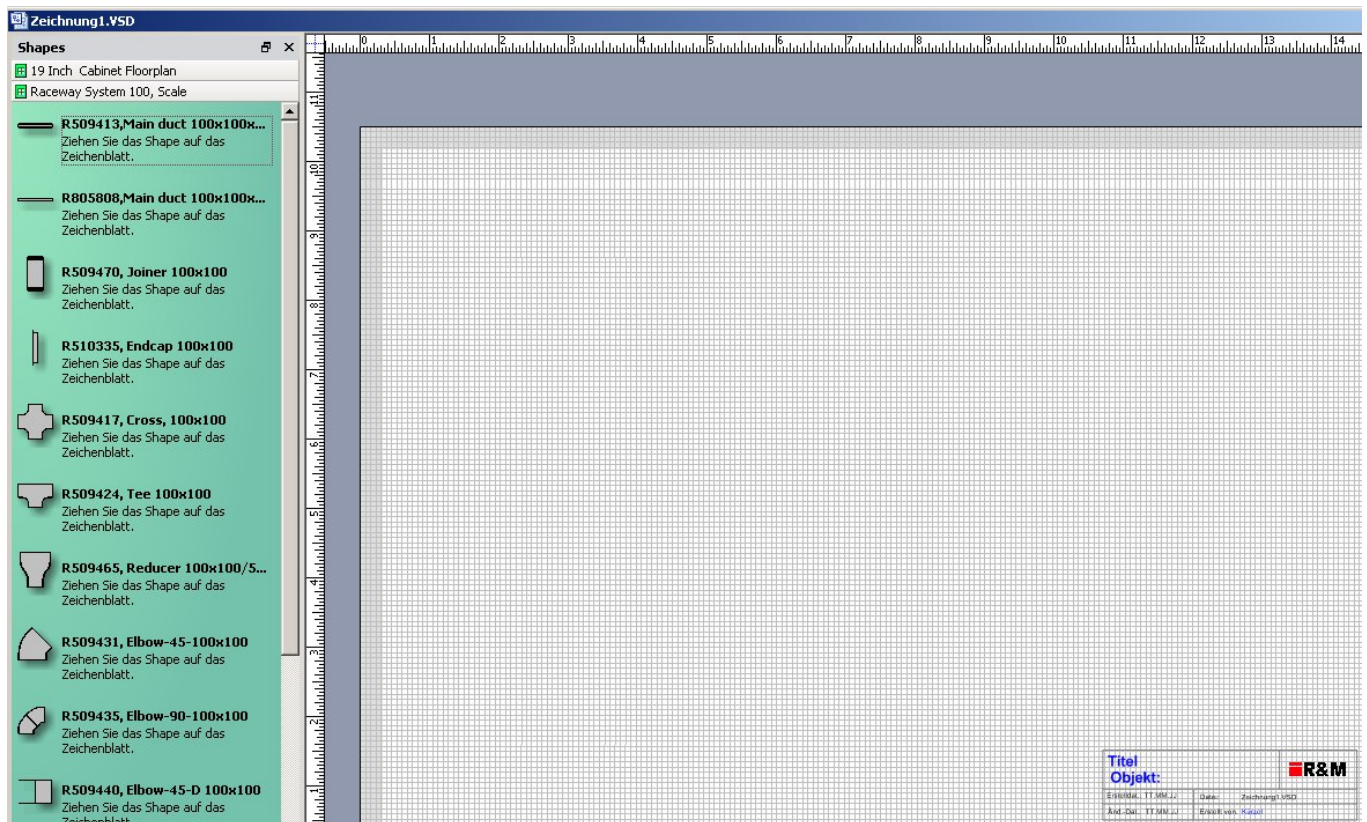
## OPENING A TEMPLATE

Scale used in the example: 1:50

Open the template: "Raceway Scale 1 to 50.vst"

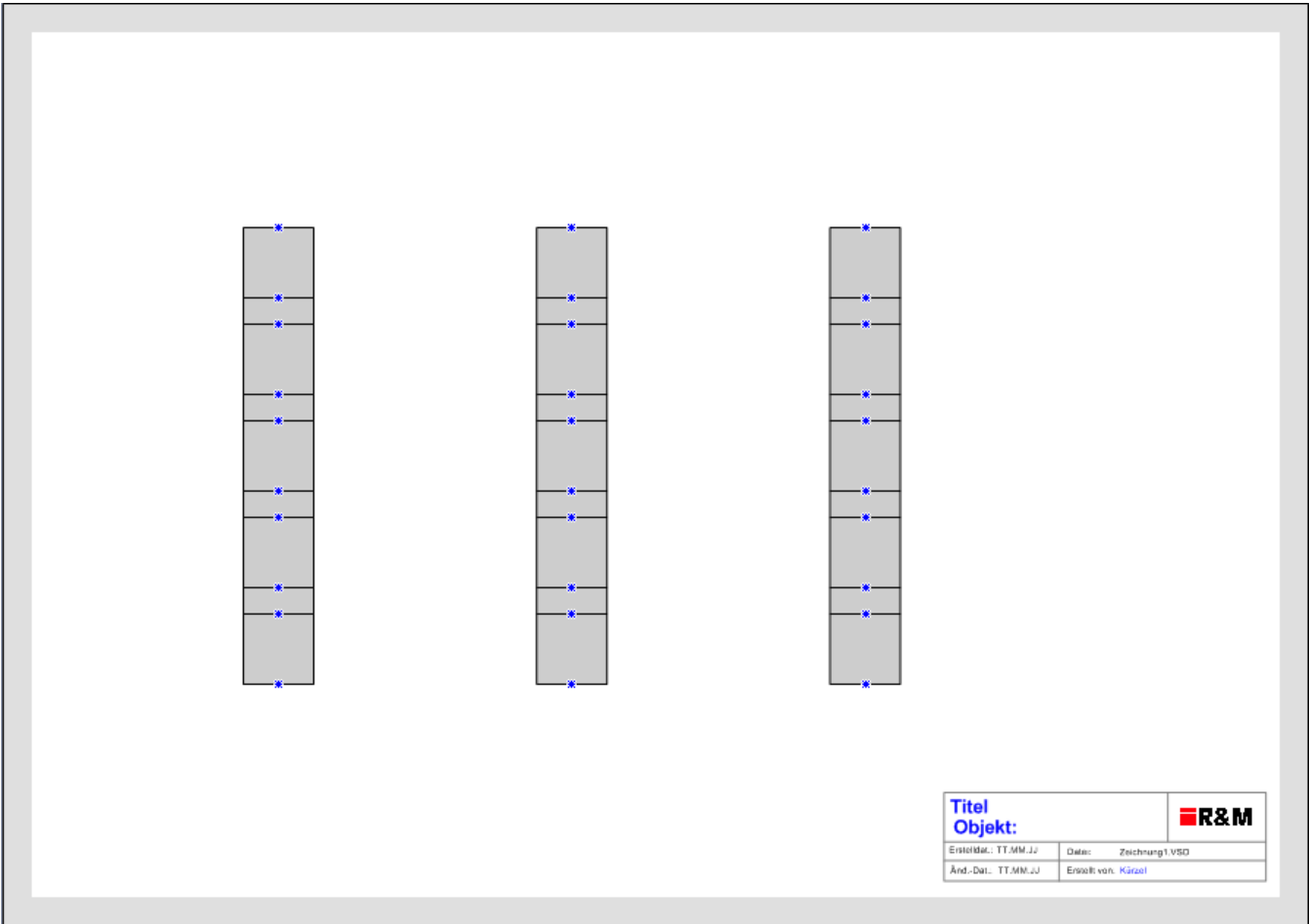
Then open the R&M Visio template: "Raceway System 100"  
(example of 100 mm ducts)

Then open the R&M Visio template: "19 Inch Cabinet Floorplan"



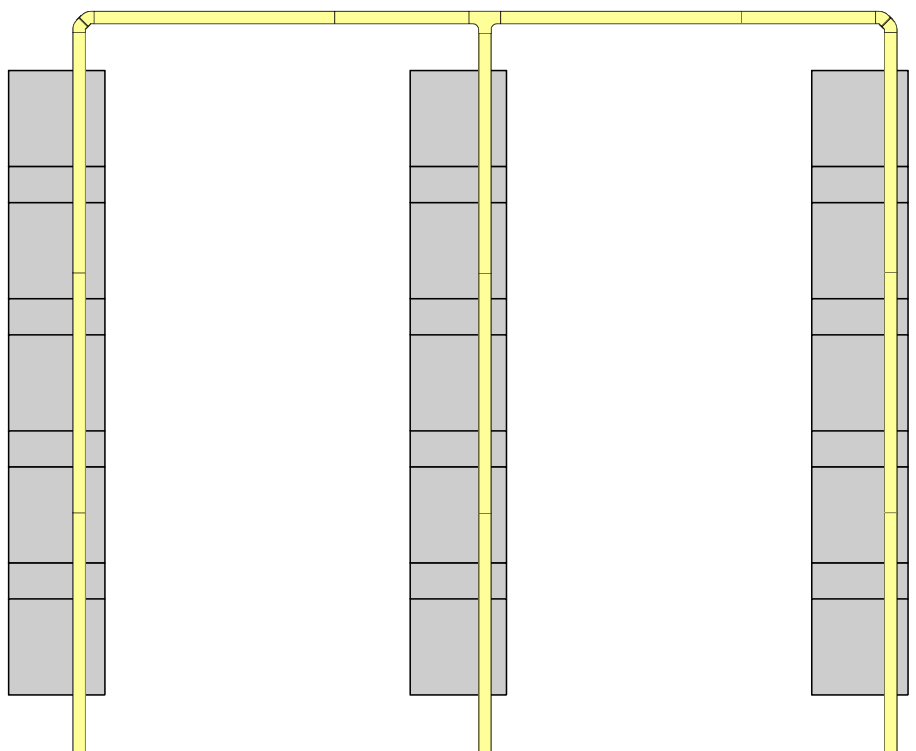
DRAWING 19" RACKS ETC. INTO THE FLOORPLAN

Using the Visio template "19 Inch Cabinet Floorplan"



## 1. DRAWING THE SYSTEM OF DUCTS

In this first phase, simply click and drag the Raceway elbows, T-joints, end caps etc. into position so that they form the required cable ducts.

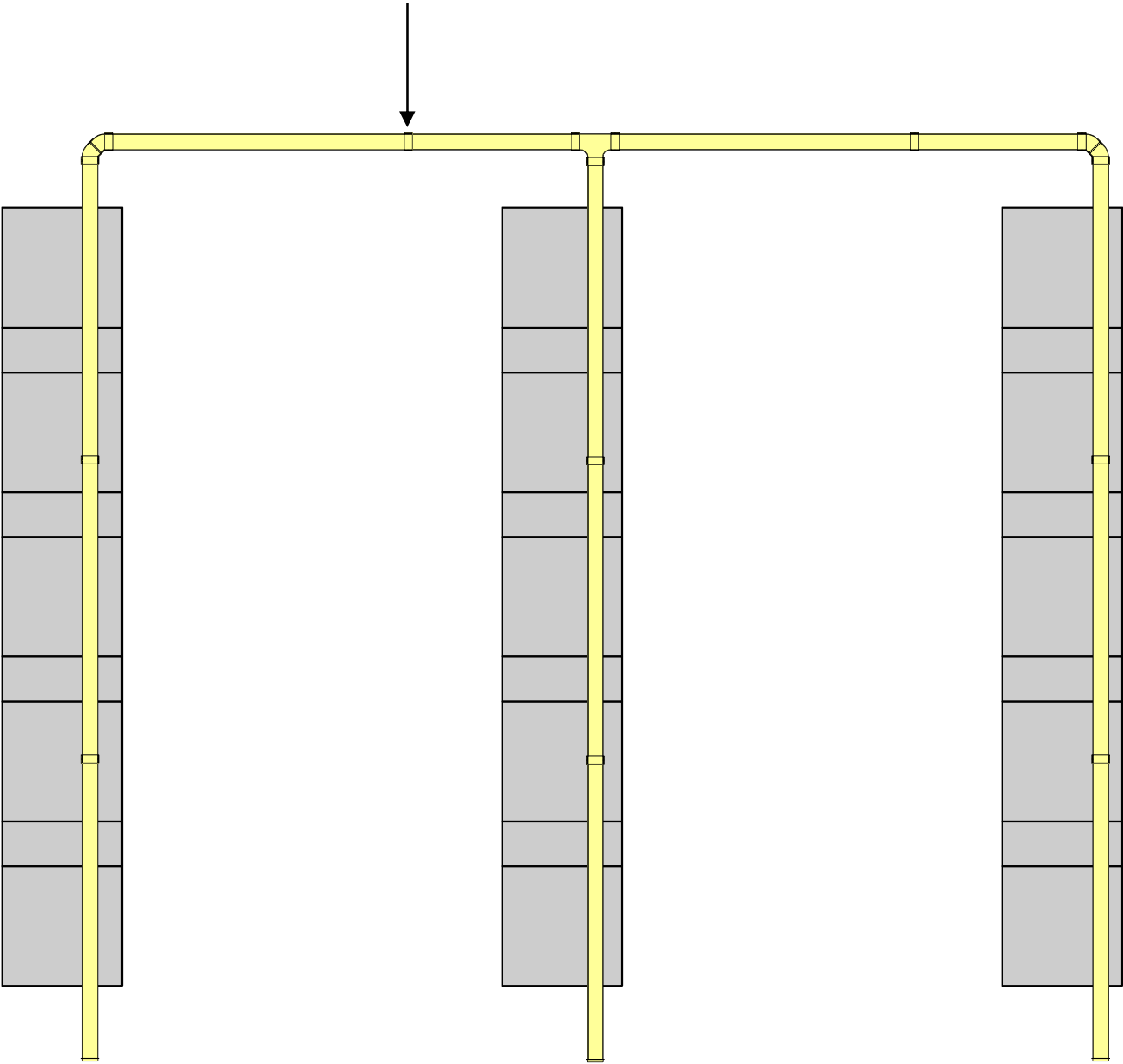


## 2. SHORTENING CABLE DUCTS IF NECESSARY

The cable ducts are available in the lengths of 1000mm and 2000mm. Should you required shorter ducts, simply shorten them in the drawing to the required length

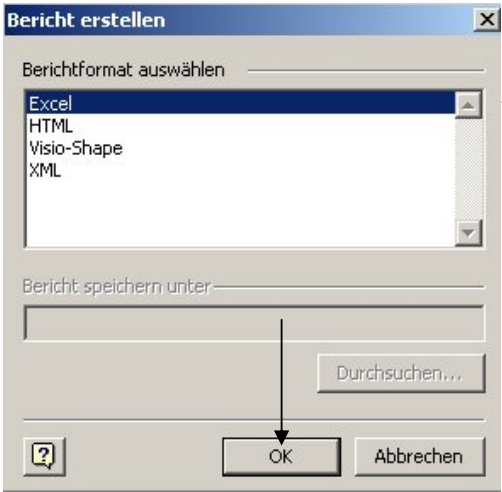
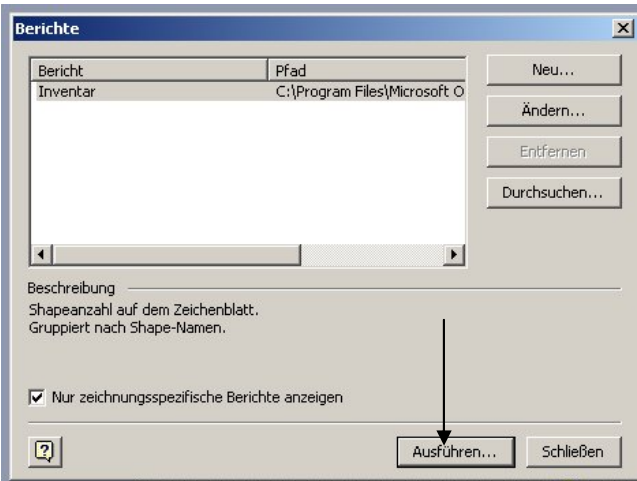
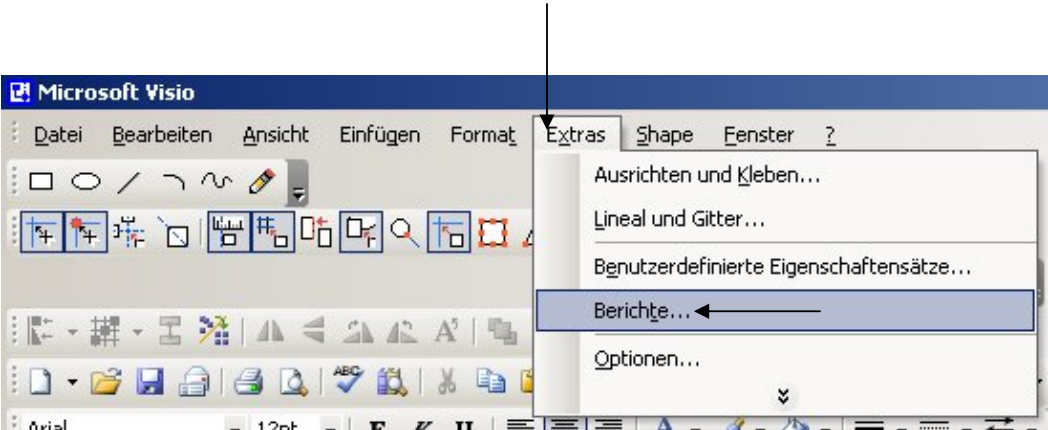


3. ADDING THE JOINERS





4. CREATING THE PARTS LIST

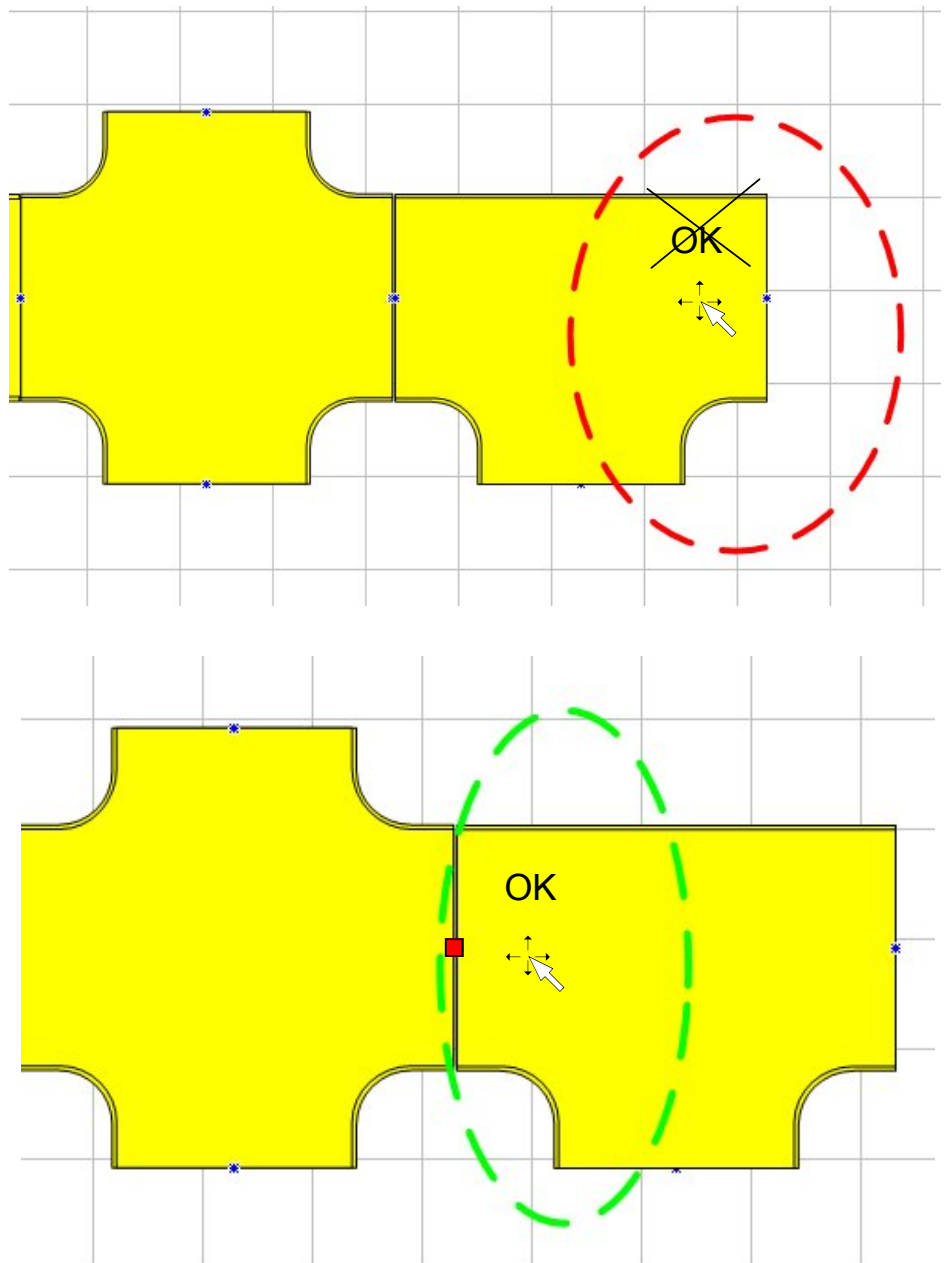


Inventar	
Master-Shapename	Anzahl
19" Cabinet 800x800	15
Space optimisation 300x800	12
R509424, Tee 100x100.69	1
R509435, Elbow-90-100x100.68	2
R509470, Joiner 100x100.70	15
R510335, Endcap 100x100.71	3
R805808, Main duct 100x100x2000.67	13

○ Please disregard  
(program related)

## 5. PERFECT GRAB POINT

To achieve perfect bonding of the individual elements at their blue contact points, grab the element as close as possible at its contact point with your mouse pointer and then drag it to the target contact point.





---

---

**Headquarters**

Reichle & De-Massari AG  
Binzstrasse 32  
CHE-8620 Wetzikon/Switzerland  
Phone +41 (0)44 933 81 11  
Fax +41 (0)44 930 49 41

**[www.rdm.com](http://www.rdm.com)**

---