



R&M*foxs*

VENUS-Family

Mai 2014



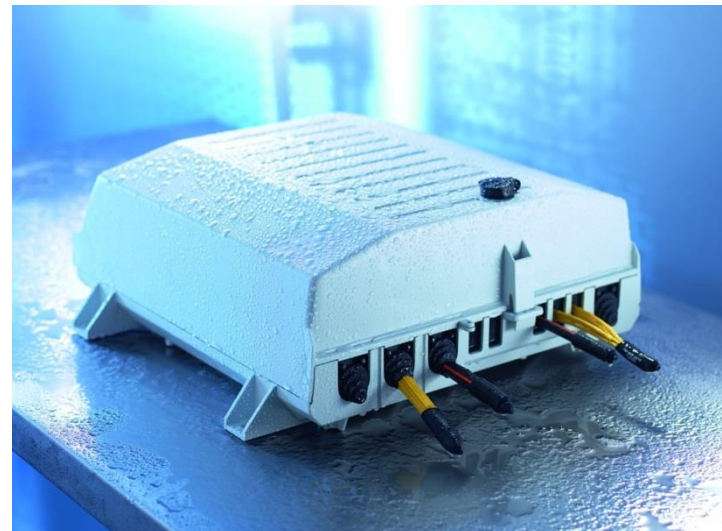
Convincing cabling solutions

Venus Family - Introduction

Unlimited combinations to protect your connectivity

The Venus Box is a connection **distribution box** for Telecom and Datacom networks in public and private applications.

It is no-metallic and ensures **highest protection** for electrical and optical connectivity in demanding, in-/outdoor **long-term use**.



Venus Family – Naming concept

Technologie	Size	System
C = Copper	SM = Small	SCM
F = Fiber	ME = Medium	
H = Hybride	ML = Medium-Large	
	LA = Large	
	XL = X-Large	
	XXL = XX-Large	

Venus Family – Solution for Copper- and Hybrid Networks

ME



ML



LA



for copper (CME)

for copper (CML)

hybrid (HLA)

for copper (CLA)

Venus Family – Solution for Fiber optic Networks

Venus-FLA



Venus-FLA-SCM



Venus-FML



Venus-FLA2-SCM

Venus-FXXL-SCM



Venus-FXL-SCM



Venus Family - Benefits

... protects your connections

- Vandalism and unauthorized access
- Water and dust
- Impact and leakage



Venus Family - Benefits

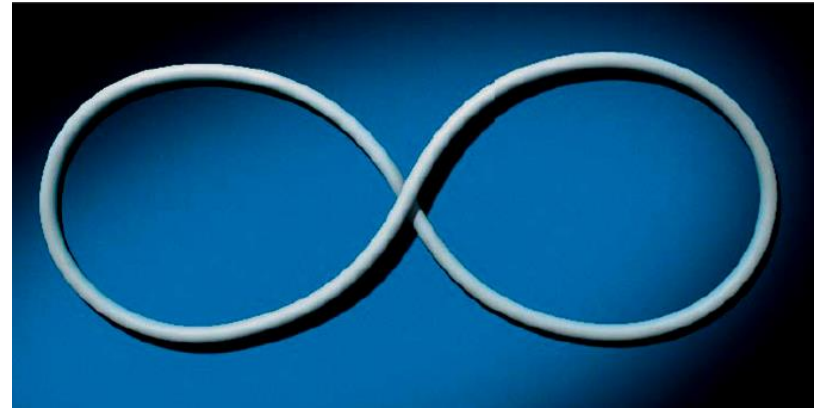
... protects your investment

- Durable and ready for next generation application and connectivity
- Long-term use throughout years of exposure



Venus Family - Benefits

- ... guarantees highest transmission reliability
- Spacious cable/fiber management for easy and safe handling during operation and maintenance



Venus Family - Features

Venus Box made of ASA (thermoplastic) is ...

- non-metallic
- Weather resistant (UV)
- thermally stable (cold/heat)
- resists salts, fuels and detergents, iciness
- Impact resistant
- lightweight



Venus Family - Features

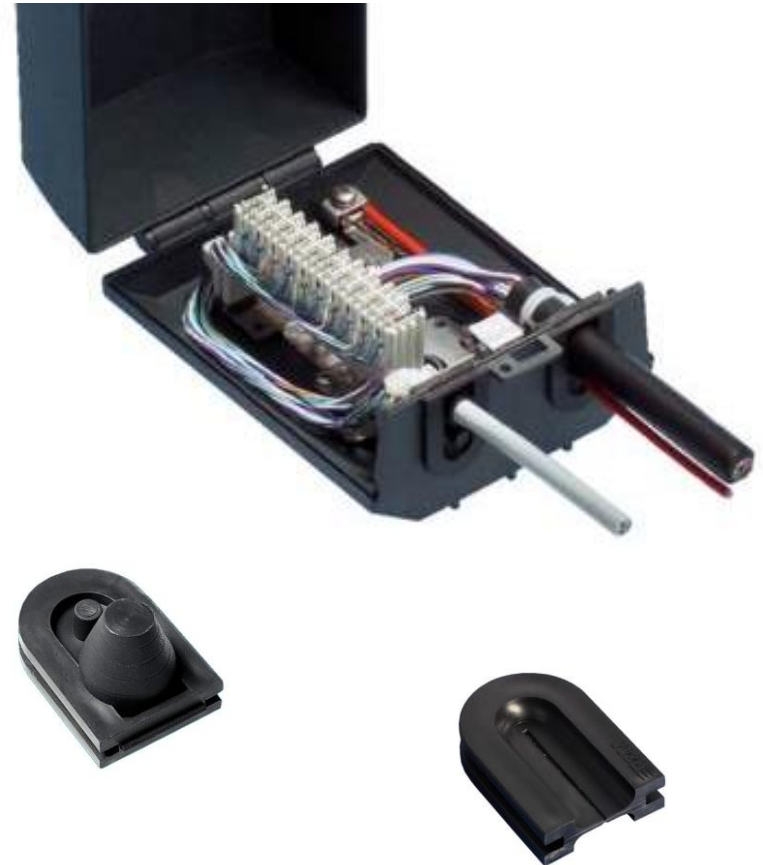
- Up to IP 54 *
- Seal or lock
- Proper cable/fiber management
- Modular cable entry plugs
- Direct wall mounting
- Pole fixing bracket



Venus Family - CME

Capacity

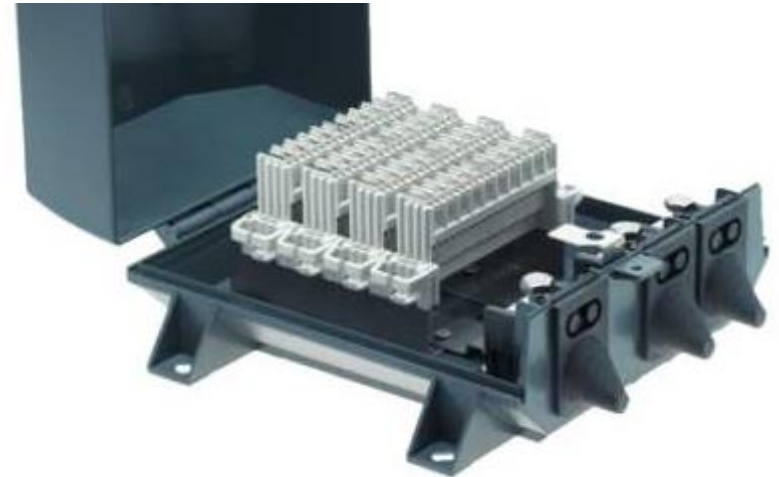
- VS Compact
1 pcs. 10pairs module
- Dropwire
up to 5 pcs. Dropwire
modules
- Accessories
Cable and/or dropwire
entry



Venus Box - CML

Capacity

- VS Compact
4pcs. 10pairs module
- Accessories
Cable and/or dropwire
entry



Venus Family - FML

Capacity

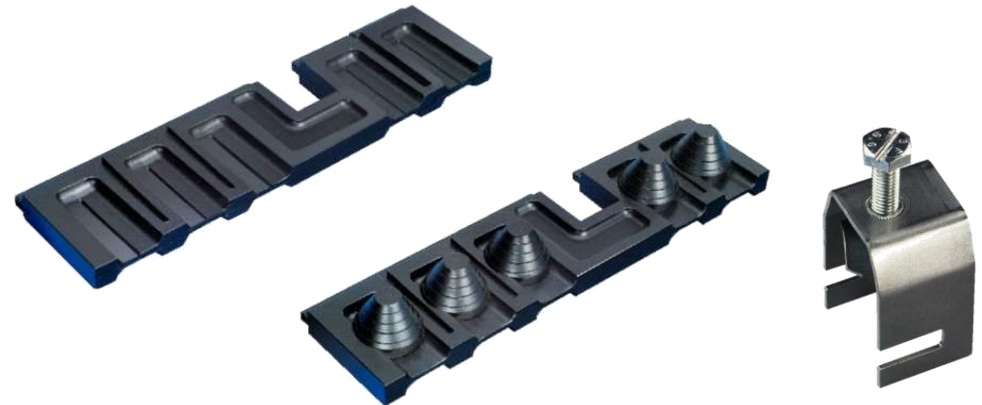
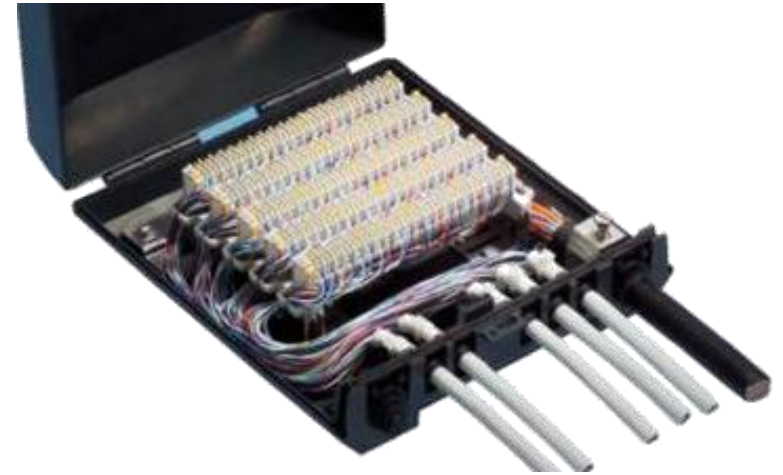
- Up to 6 fibers *8
- LC Duplex, SC duplex, E-2000
- 1 large splice tray R40 incl. over length tray for loose tube
- Accessories
- Splice cover with seal



Venus Family - CLA

Capacity

- VS Compact
up to 5 pcs. 10 pair module
up to 5 pcs. 20 pair module
- VS Standard
up to 5 pcs. 10 pair module
- Dropwire
up to 20 pcs. Dropwire
modules



Venus Family - HLA

Capacity

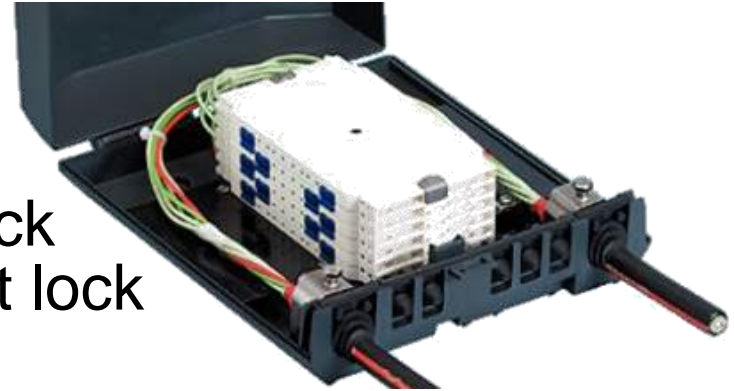
- up to 4 splice trays R30 (splicing through)
- up to 5 VS Compact 10pairs modules
- Accessories
Cable entry and - clamp



Venus Family - FLA

Capacity

- Splice through version
up to 4 splice trays R30 with lock
up to 6 splice trays R30 without lock
- Splice/connector version
up to 24 fibers E-2000, SC, LC
up to 12 fibers ST, FC



Venus Family – FLA-SCM

Capacity

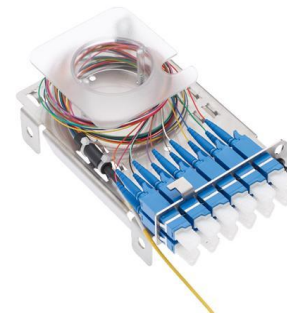
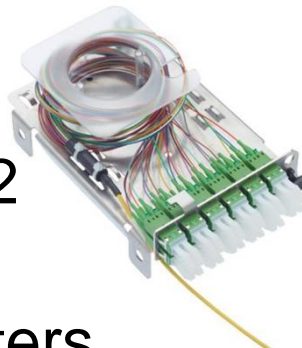
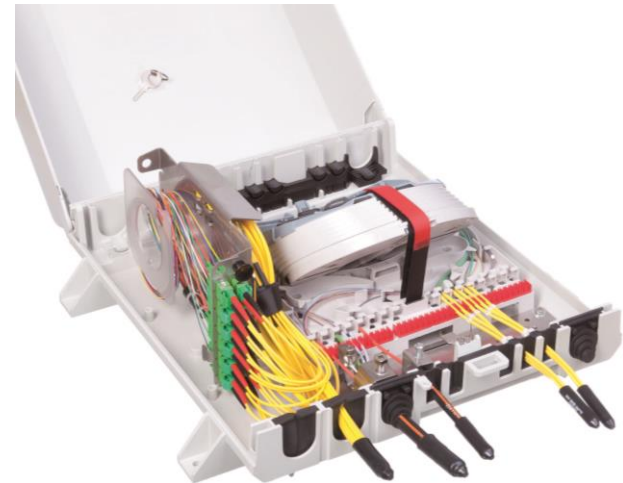
- SE tray up to 144 fibers
6 trays x 24 splices
- Splitter tray up to 6 trays
for splitter up to 1:32
- SC tray up to 72 fibers
12 trays x 6 splices



Venus Family - FLA2-SCM

Capacity

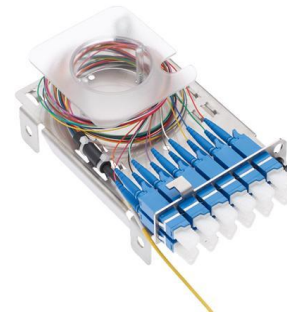
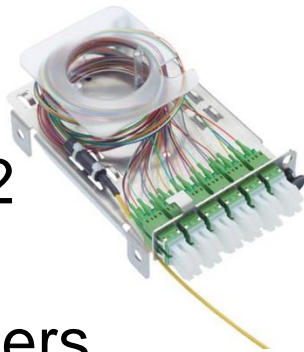
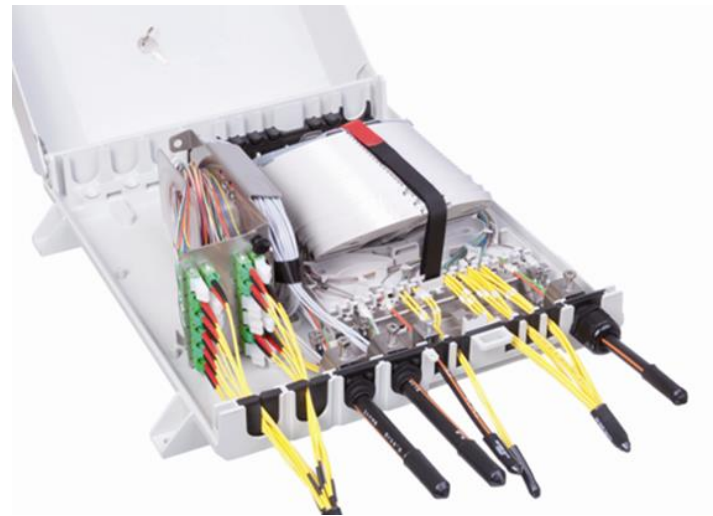
- SE 144 fibers
6 trays x 24 splices
- SC 72/144 fibers
12 trays x 6/12 splices
- Splitter trays
up to 6 trays
for Splitter up to 2:32
- Up to 12/24 fiber adapters
LC, SC, E-2000



Venus Family - FXL-SCM

Capacity

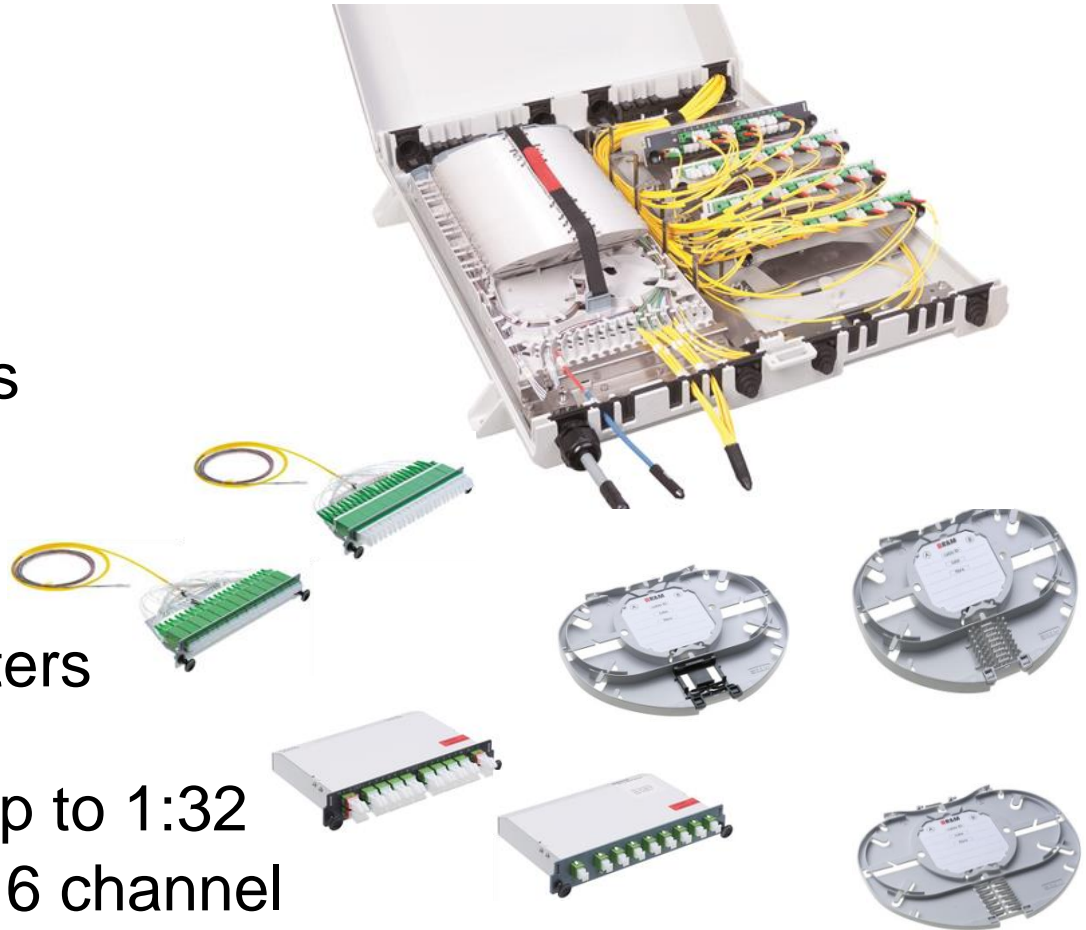
- SE 288 fibers
12 trays x 24 splices
- SC 144/288 fibers
24 trays x 6/12 splices
- Splitter trays
up to 6 trays
for Splitter up to 2:32
- Up to 24/48 fiber adapters
LC, SC, E-2000



Venus Family - FXXL-SCM

Capacity

- SE 864 fibers
36 trays x 24 splices
- SC 432/864 fibers
72 trays x 6/12 splices
- Splitter trays
up 36 trays
for Splitter up to 2:32
- Up 96/192 fiber adapters
LC, SC, E-2000
- Up 2 Splitter inserts up to 1:32
- Up 2 CWDM inserts 16 channel



Technical Data

Mechanical characteristics

Characteristics	Description	According to
Handling at operation temperature test	Assemble and termination at operation temperature: - 20° C / + 55° C	IEC 60721-3-4
Transport and storage temperature test	Open / close the box at transport and storage temperature: - 40° C / +85° C	Internally test
drop test	No damages at fall: - From 2 meters altitudes upon wood-ground - From 4 meters altitudes upon asphalt-ground	Internally test
Impact test	Impact on differently parts of the box: (After 35 weeks dry heat at +85° C) - Impact 6.8Nm (1.3 meter, 0.54 Kg, Ø50.8mm)	UL 1863, No. 34
Vibration test	Vibration in x-, y-, z-axis: - 10 Hz up to 19 Hz, 1g acceleration - 19 Hz up to 55 Hz, 0.75mm amplitude - 55 Hz up to 150 Hz, 1g acceleration	IEC 60068-2-6 VDE 0804 Bellcore TR-NWT 000975 VDE 0804

Technical Data

Environmental characteristics

Characteristics	Description	According to
Dust and Water protection	IP54 (with cable entry plug) Protection against dust (no aggressive deposits) Protection against splashing water from all directions	IEC 60529
Salt mist test	Temperature: 35° C Salt concentration: 50g NaCl / liter at pH 6.5 Salt mist quantity: 1,8ml / hour • 80cm ² Time: 96 hour	IEC 60068-2-11
Sulphur dioxide test	Temperature: 22° C Gas concentration: 10ppm SO ₂ Relative Humidity: 75% Time: 10 days	IEC 60068-2-42
Hydrogen sulphide test	Temperature: 22° C Gas concentration: 1ppm H ₂ S Relative Humidity: 75% Time: 4 days	IEC 60068-2-43
Dry heat	Temperature: 85° C Time: 14 weeks	IEC 60068-2-2
Damp heat, cyclic (12 + 12-hour cycle)	Temperature: 25° C / 55° C Relative Humidity: 93% Time: 14 weeks	IEC 60068-2-30



Reichle & De-Massari AG
Binzstrasse 31
CHE-8622 Wetzikon / Switzerland
Phone +41(44) 933 81 11

Internet www.rdm.com